

DIATOMS (*BACILLARIOPHYCEAE*) IN RIVERS AND STREAMS AND ON CULTIVATED SOILS OF THE PODKARPACIE REGION IN THE YEARS 2007–2011

Teresa Noga¹, Natalia Kochman¹, Łukasz Peszek², Jadwiga Stanek-Tarkowska³, Anita Pajączek³

¹ Department of Biological Foundations of Agriculture and Environmental Education, Faculty of Biology and Agriculture, University of Rzeszów, Ćwiklińskiej 2, 35–601 Rzeszów, Poland, e-mail: teresa.noga@interia.pl; kochman_natalia@wp.pl

² International Doctoral Studies in Natural Sciences, Faculty of Biology and Agriculture, University of Rzeszów, Ćwiklińskiej 2, 35–601 Rzeszów, Poland, e-mail: lukaspeszek@gmail.com

³ Department of Soil Studies, Environmental Chemistry and Hydrology, Faculty of Biology and Agriculture, University of Rzeszów, Ćwiklińskiej 2, 35–601 Rzeszów, Poland, e-mail: jagodastanek@wp.pl; chuanita66@poczta.fm

Received: 2013.11.08

Accepted: 2013.12.15

Published: 2014.01.15

ABSTRACT

Diatoms *Bacillariophyceae* are a specialized, systematic group of algae, living in different types of ecosystems, and they are very good indicators of water quality. Recently, detailed studies have been carried out in the territory of the Podkarpacie Province on the diversity of diatoms in running waters. The area of study covers mostly the catchment of the biggest rivers of the province (mainly the Wisłok River) and cultivated soils. Running waters in the Podkarpacie Province are characterized by a huge species richness of diatoms, 738 different taxa have been found so far. The highest number of taxa was noted in the Wisłok River (400), while the Żołyńianka and Różanka streams and the Mlecza were also characterized by huge diversity (from 200 to over 350 taxa). In the majority of studied sites diatoms of alkaline (pH>7) and nutrient rich (eutrophic) waters dominated: *Navicula lanceolata*, *N. gregaria*, *N. capitatoradiata*, *Nitzschia palea*, *N. dissipata* ssp. *dissipata*, *Achnantheidium minutissimum* var. *minutissimum*, *A. pyrenaicum*, *Amphora pediculus*, *Diatoma vulgaris*, *Rhoicosphenia abbreviata*, *Planothidium lanceolatum*, *Cocconeis pediculus* and *C. placentula* var. *lineata*. About 150 taxa were identified on cultivated soils, among which the largest populations were formed by *Hantzschia amphioxys*, *Mayamaea atomus*, *Nitzschia palea*, *N. pusilla*, *Pinnularia obscura* and *Stauroneis thermicola*.

Keywords: diatoms *Bacillariophyceae*, diversity, taxonomy, Podkarpacie Region.

INTRODUCTION

Diatoms are a specialized, systematic group of algae occurring in almost all water ecosystems and other wet habitats, such as: soils, rocks, caves, sea ice, springs (cold, hot and salty). It includes above 10 000 species, from which above 3000 taxa (sea and freshwater) have been recorded on the territory of contemporary Poland. They are a systematic group used in assessment of water quality. Their huge richness and diver-

sity causes the degree of recognition of diatoms to be unequal [Siemińska 1977, Rakowska 2001, Wołowski 2003, Siemińska et al. 2006]. Rivers and streams in southern Poland are the best recognized due to the studies of Siemińska, Kawecka and Kwandrans [Siemińska 1990, Siemińska, Pajak 1992, Kwandrans 1989, Kawecka 2012].

Until recently the Podkarpacie Province had not been studied in algological terms. Only fragmentary studies have been conducted in the upper course of the San River in connection with



the appearance of the *Didymosphenia geminata* diatom, which developed massively below reservoirs in Solina and Myczkowce [Kawecka, Sanecki 2003].

Since 2007, studies have been conducted on the diversity of diatoms in running waters of the Podkarpace Province [Mucha et al. 2009, Noga, Siry 2010, Tambor, Noga 2011, Noga 2012, Pajaczek et al. 2012], and since 2009, studies have also been carried out on cultivated soils [Stanek-Tarkowska, Noga 2011, 2012].

The aim of studies on running waters and soils of the Podkarpace Province is, first of all, to recognize the species diversity of diatoms, while pointing out both endangered and rare species. The present work is a summary of current studies and their results, gathered over 5 years (2007–2011).

STUDY AREA

Three separate physiographic regions can be singled out on the territory of the Podkarpace Province: the Sandomierska Valley (in the north), the Carpathian Foothills (the middle part), the

Low Beskid and the Bieszczady mountains in the south [Kondracki 2001]. Just a small southeastern part of the Province (about 1.3%) belongs to the catchment area of the Diestr River, and it is drained by Strwiąż, Mszaniec and Lechnawa rivers. The Wisła River makes the primary drainage system, with two big inflows: the San and the Wisłok River, which belongs to the Baltic Sea Basin. The San River, about 443.4 km long, is the richest water of the Carpathian Region, with its sources located on the territory of the Ukraine. The longest inflow of the San River is the Wisłok River, about 228.5 km, which, similarly to the Wisłoka River (163.6), begins in the Low Beskids. All the biggest rivers of the voivodeship have a mountainous character in their upper courses, and their catchment areas are extremely valuable in natural terms.

Generally conducted studies on the territory of the Podkarpace Province include rivers and streams in the valley of the Wisłok River (the Carpathian Foothills). However, single study sites are located in valleys of the Wisłoka and the San rivers, and also on the afore-mentioned rivers themselves (Figure 1).

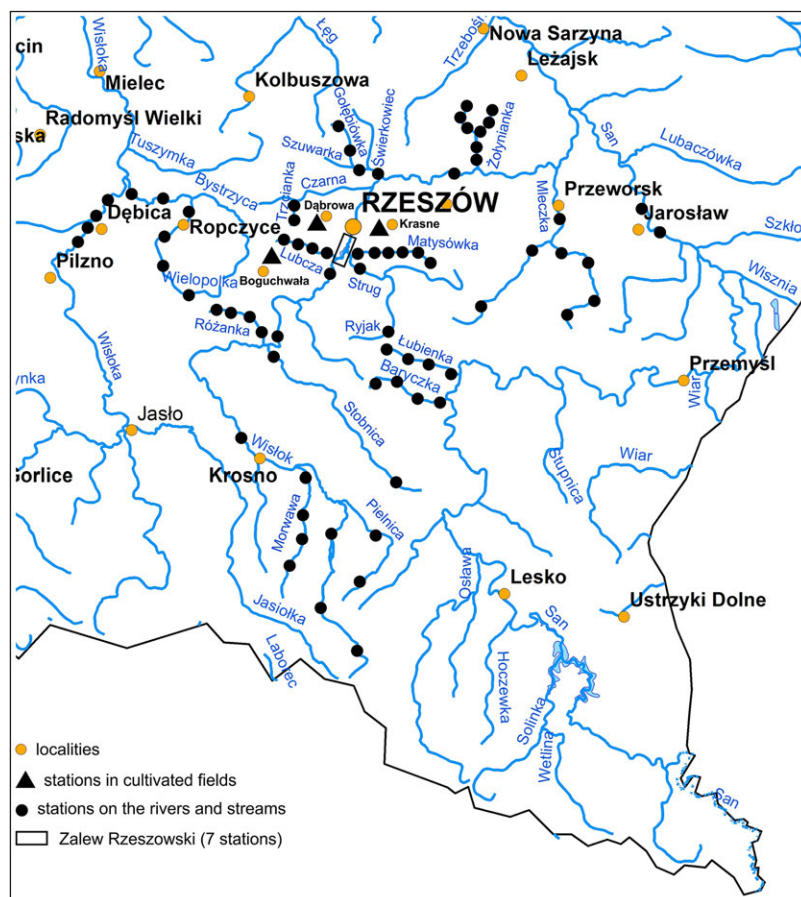


Figure 1. Distribution of studies stations in Podkarpace Region

MATERIALS AND METHODS

Materials for study were taken, over a period of 5 years (2007–2011), from the territory of the Podkarpacie Province. The majority of study sites were located in the catchment area of the Wisłok River. The number of study sites on rivers and streams were: Wisłok – 8 sites, and in the Rzeszów Reservoir – 7 sites, Morwawa – 4 sites, Pielnica – 2 sites, Stobnica – 2 sites, Mlecza – 7 sites, Lubcza – 4 sites, Strug – 1 site and streams: Różanka – 4 sites, Ryjak – 1 site, Szuwarka – 1 site, Gołębiówka – 2 sites, Świerkowiec – 1 site, Żołynianka – 8 sites, Trzcianka – 2 sites, and Matysówka – 6 sites. Studies were also conducted on the Wisłoka River (4 study sites) and its inflow: Wielopolka (6 sites), and also on the San River (2 sites) and its two inflow streams: Łubienka (4 sites) and Baryczka (4 sites). Also, since 2009, soil diatoms have been studied, mainly on cultivated soils in Krasne (2 study sites), Boguchwała (3 study sites) and Dąbrowa (2 study sites) (Figure 1).

Material for studies in rivers and streams was taken from rocks, silt and water plants, in seasons from spring to autumn within a year in every studied current, and it was then prepared and processed according to the methods applied in this type of research [Kawecka 2012]. At the same time pH values and conductivity were measured. Collected material was preserved in a 4% formalin solution. Soil samples were taken once during the autumn season on study sites in Dąbrowa and Boguchwała and on the study site in Krasne once a month (from spring to autumn). In order to obtain pure valves of diatoms, part of the obtained material was subjected to maceration in a mixture of sulphuric acid and potassium dichromate at a proportion of 3:1, and rinsed in a centrifuge (at $2500 \text{ rev} \times \text{min}^{-1}$). Cleaned diatoms were embedded in Pleurax synthetic resin (refractive index 1.75).

Soil samples were taken from stratum 0–3 cm to Petri dishes (3 samples from each study site), and next the material was subjected to maceration in acids (similarly as in the case of samples taken from water).

Diatoms were identified using a light microscope, “Nikon ECLIPSE 80i” at a magnification of 1000x, according to the keys: Krammer and Lange-Bertalot [1986–1991], Lange-Bertalot [2001], Krammer [2000] and Hofmann et al. [2011].

The number of noted species was obtained through calculating valves in randomly chosen fields of view of the microscope, until a total number of 400 cells was obtained. The most numerous species were those, whose participation in a given community was above 5%.

Based on the Red List of Algae, created for Poland [Siemińska et al. 2006], species, which were rare and endangered to different degrees, were singled out and assigned to the following categories: E – endangered, V – vulnerable, R – rare, I – indeterminate.

RESULTS

Measurements of pH and conductivity conducted in the open field indicated that all studied currents were characterized by alkaline or close to neutral water reactions (pH: 7–9), whereas conductivity was between above 100 to above $700 \mu\text{S}/\text{cm}$.

The existence of 738 taxa of diatoms was identified during studies in 2007–2011 on the territory of the Podkarpacie Province. The largest diversity was encountered in the Wisłok River, in which 400 taxa were found on 8 sites. Huge species richness was noted also on many inflows of the Wisłok River, in which the Żołynianka stream was characterized by the largest number (365 taxa on 8 studying sites). Over 200 taxa were also identified in the Mlecza, Stobnica, Pielnica, Morwawa and Ryjak streams and on the San River (253), on two study sites near Jarosław city (Table 1).

Diatoms characteristic for alkaline (pH>7) and fertile, i.e. eutrophic waters, dominated on the majority of studied rivers and streams in the Podkarpacie Province. The most frequent were: *Navicula lanceolata*, *N. gregaria*, *N. capitatoradiata*, *Nitzschia palea*, *N. dissipata* ssp. *dissipata*, *Achnanthydium minutissimum* var. *minutissimum*, *A. pyrenaicum*, *Amphora pediculus*, *Diatoma vulgare*, *Rhoicosphenia abbreviata*, *Planorhynchium lanceolatum*, *Cocconeis pediculus* and *C. placentula* var. *lineate* (Plate 1: 1–30).

Achnanthydium minutissimum var. *minutissimum* and *A. pyrenaicum* formed the most numerous populations in the upper sections of rivers and streams (30–50%), whereas in the middle and lower sections the most numerous were *Navicula lanceolata* and *N. gregaria* (above 30%).

Among 738 diatom taxa, 80 were endangered and rare, appearing in the Polish Red List



Table 1. The list of diatom taxa found at studies sites in the Podkarpace Region

Taxa / Site	1	2	3	4	5	6	7	8	9	10	11	12	13	14	15	16	17	18	19	20	21	22	0	
<i>Achnanthes coarctata</i> (Bréb.) Grun.		+								+	+	+		+	+		+		+			+	R	
<i>Achnanthes expressa</i> Carter		+												+	+									
<i>Achnanthes exigua</i> var. <i>exigua</i> Grun.		+																				+		V
<i>Achnanthes rupestoides</i> Hohn		+																						
<i>Achnanthes</i> cf. <i>expressa</i> Carter										+														
<i>Achnanthes</i> sp.					+																			
<i>Achnantheidium affine</i> (Grun.) Czarn.																						+		
<i>A. eutrophilum</i> (Lange-Bert.) Lange-Bert.																						+		
<i>Achnantheidium minutissimum</i> var. <i>jackii</i> (Rabenh.) Lange-Bert.			+																				+	
<i>Achnantheidium minutissimum</i> (Kütz.) Czarn. var. <i>minutissimum</i>	+	+	+	+	+	+	+	+	+	+	+	+	+	+	+	+	+	+	+	+	+	+	+	
<i>Achnantheidium pyrenaicum</i> (Hust.) Kobayasi	+	+	+		+					+	+	+	+	+	+	+	+	+	+	+	+	+	+	
<i>Achnantheidium saprophilum</i> (Kobayasi & Mayama) Round & Bukht.					+					+			+	+		+	+					+		
<i>Achnantheidium subatomus</i> (Hust.) Lange-Bert.		+							+															
<i>Adlafia brockmannii</i> (Hust.) Bruder & Hinz		+											+	+		+						+	+	
<i>Adlafia bryophila</i> (Petersen) Moser, Lange-Bert. & Metzeltin																							+	
<i>Adlafia minuscula</i> (Grun.) Lange-Bert. var. <i>minuscula</i>	+	+		+																				
<i>Adlafia minuscula</i> var. <i>muralis</i> (Grun.) Lange-Bert.																						+		
<i>Amphipleura pellucida</i> (Kütz.) Kütz.		+								+	+	+	+	+	+	+	+							R
<i>Amphipleura</i> sp.						+																		
<i>Amphora alpestris</i> Levkov																							+	
<i>Amphora cimbrica</i> Østrup		+	+		+						+	+	+	+		+	+					+		R
<i>Amphora copulata</i> Ehrenb.	+	+	+	+	+	+	+	+	+	+	+	+	+	+	+	+	+	+	+	+	+	+	+	
<i>Amphora hemicycla</i> Stoermenr & Yang																							+	R
<i>Amphora inariensis</i> Krammer		+	+	+	+						+	+	+	+	+	+	+					+	+	
<i>Amphora indistincta</i> Levkov																							+	
<i>Amphora micra</i> Levkov													+										+	
<i>Amphora minutissima</i> ? W. Smith													+											
<i>Amphora ovalis</i> (Kütz.) Kütz.		+	+	+	+					+	+	+	+	+	+	+	+		+	+	+	+	+	
<i>Amphora pediculus</i> (Kütz.) Grun.	+	+	+	+	+	+				+	+	+	+	+	+	+	+	+	+	+	+	+	+	
<i>Amphora</i> sp. 1			+											+										
<i>Amphora</i> sp. 2			+																					
<i>Amphora</i> sp. 3			+																					
<i>Amphora</i> sp. 4		+																						
<i>Anomoeoneis sphaerophora</i> (Ehrenb.) Pfitzer		+			+					+	+			+		+							+	
<i>Asterionella formosa</i> Hassal	+	+	+		+					+	+			+	+	+	+		+	+	+	+	+	
<i>Aulacoseira ambigua</i> (Grun.) Simonsen	+	+			+										+		+	+				+	+	
<i>Aulacoseira distans</i> (Ehrenb.) Simonsen	+	+			+						+					+	+					+		
<i>Aulacoseira granulata</i> (Ehrenb.) Simonsen	+	+	+		+					+	+			+	+	+	+	+				+	+	
<i>Aulacoseira muzzanensis</i> (Meister) Krammer																							+	
<i>Aulacoseira</i> cf. <i>muzzanensis</i> (Meister) Krammer		+																						
<i>Aulacoseira</i> sp. 1		+															+	+					+	
<i>Aulacoseira</i> sp. 2		+																						
<i>Brachysira brebissonii</i> Ross																							+	
<i>Brachysira vitrea</i> (Grun.) Ross		+				+							+											E
<i>Caloneis aerophila</i> Bock														+									+	R
<i>Caloneis amphisbaena</i> (Bory) Cleve		+	+		+		+	+	+	+	+	+	+	+	+	+	+	+	+	+	+	+	+	
<i>Caloneis amphisbaena</i> var. <i>subsalina</i> (Donkin) Huls				+																				
<i>Caloneis bacillum</i> (Grun.) Cleve		+	+	+	+	+				+	+	+	+	+	+	+	+		+	+	+	+	+	R
<i>Caloneis fontinalis</i> (Grun.) Lange-Bert. & Reichardt													+										+	+
<i>Caloneis hyalina</i> Hust.				+																				R
<i>Caloneis lancettula</i> (Schulz) Lange-Bert. & Witkowski		+			+						+	+										+	+	+
<i>Caloneis leptosoma</i> (Grun.) Krammer																							+	
<i>Caloneis macedonica</i> (?) Hust.																+								
<i>Caloneis molaris</i> (Grun.) Krammer		+								+	+	+	+	+	+				+	+		+	+	R
<i>Caloneis pulchra</i> Messikommer				+																				
<i>Caloneis schumanniana</i> (Grun.) Cleve		+			+						+		+		+									R
<i>Caloneis silicula</i> (Grun.) Cleve	+	+	+	+	+	+	+	+	+	+	+	+	+	+	+	+	+	+	+	+	+	+	+	

Table 1 contin.

Taxa / Site	1	2	3	4	5	6	7	8	9	10	11	12	13	14	15	16	17	18	19	20	21	22	0		
<i>Caloneis tenuis</i> (Greg.) Krammer																						+	+		
<i>Caloneis vasileyavae</i> Lange-Bert., Genkal & Vekhov																								+	
<i>Caloneis cf. lancettula</i> (Schulz) Lange-Bert. & Witkowski	+										+														
<i>Caloneis cf. tenuis</i> (Greg.) Krammer													+												
<i>Caloneis</i> sp.												+												+	
<i>Campylodiscus hibernicus</i> Ehrenb.																		+							
<i>Cavinula cocconeiformis</i> (Gregory) D.G.Mann & Stickle													+												
<i>Cavinula lapidosa</i> (Krasske) Lange-Bert.													+												
<i>Cavinula</i> sp.														+											
<i>Chamaepinnularia krookii</i> (Grun.) Lange-Bert. & Krammer		+																					+		R
<i>Chamaepinnularia soechrensis</i> (Krasske) Lange-Bert. & Krammer													+												
<i>Chamaepinnularia submuscolica</i> (Krasske) Lange-Bert.																							+	+	
<i>Chamaepinnularia cf. krookii</i>			+																						
<i>Cocconeis disculus</i> (Schum.) Cleve		+																							R
<i>Cocconeis neodiminuta</i> Krammer		+												+											
<i>Cocconeis pediculus</i> Ehrenb.	+	+	+	+	+					+	+	+	+	+	+	+	+	+	+	+	+	+	+	+	
<i>Cocconeis placentula</i> var. <i>euglypta</i> (Ehrenb.) Grun.	+	+	+	+	+	+		+	+	+	+	+	+	+	+	+	+	+	+	+	+	+	+	+	
<i>Cocconeis placentula</i> var. <i>lineata</i> (Ehrenb.) Van Heurck	+	+	+	+	+	+	+	+	+	+	+	+	+	+	+	+	+	+	+	+	+	+	+	+	
<i>Cocconeis placentula</i> Ehrenb. var. <i>placentula</i>		+	+	+	+						+		+	+	+			+		+			+		
<i>Cocconeis pseudolineata</i> (Geitler) Lange-Bert.		+			+						+	+	+	+	+			+					+		
<i>Cocconeis</i> sp.		+										+		+		+		+							
<i>Craticula accomoda</i> (Hust.) D.G. Mann		+	+	+	+							+		+	+	+	+	+		+	+	+			
<i>Craticula ambigua</i> (Ehrenb.) D.G. Mann		+	+	+	+					+	+	+	+	+	+	+	+	+		+	+	+	+	+	
<i>Craticula cuspidata</i> (Kütz.) D.G. Mann		+	+	+	+					+	+			+	+	+	+	+	+	+	+	+	+	+	
<i>Craticula halophilla</i> (Grun.) D.G. Mann		+				+				+						+									
<i>Craticula molestiformis</i> (Hust.) D.G. Mann		+	+	+	+					+	+	+	+	+	+	+	+	+				+	+	+	
<i>Craticula</i> sp. cf. <i>molestiformis</i> (Hust.) D.G. Mann	+																								
<i>Craticula</i> sp.		+															+								
<i>Cyclostephanos dubius</i> (Fricke) Round	+	+			+								+	+		+				+	+	+			
<i>Cyclostephanos invistatus</i> (Hohn, Hellerman) Stroermer, Theriot & Håkansson	+				+																		+		
<i>Cyclotella atomus</i> Hust.		+	+	+	+	+				+	+	+		+	+	+	+	+	+	+	+	+	+	+	
<i>Cyclotella bodanica</i> var. <i>affinis</i> Grun.		+																							
<i>Cyclotella distinguenda</i> Hust.																									
<i>Cyclotella distinguenda</i> Hust. var. <i>distinguenda</i>		+											+												
<i>Cyclotella iris</i> Brun		+																							
<i>Cyclotella meneghiniana</i> Kütz.	+	+	+	+	+	+	+	+	+	+	+	+	+	+	+	+	+	+	+	+	+	+	+	+	
<i>Cyclotella ocellata</i> Pantocsek		+			+					+	+	+			+	+	+	+							
<i>Cyclotella planktonica</i> Brunthaler																								+	
<i>Cyclotella cf. cyclopuncta</i> Håkansson & Carter	+												+										+		
<i>Cyclotella</i> sp. cf. <i>distinguenda</i> Hust.	+																								
<i>Cyclotella</i> sp. cf. <i>glabriuscula</i> (Grun.) Håkansson																								+	
<i>Cyclotella</i> sp. cf. <i>ocellata</i> Pantocsek		+																							
<i>Cyclotella</i> sp. 1		+																							
<i>Cyclotella</i> sp. 2		+																							
<i>Cyclotella</i> sp. 3												+				+									
<i>Cylindrotheca gracilis</i> (Bréb.) Grun.													+			+	+	+				+		+	
<i>Cymatopleura elliptica</i> (Bréb.) W. Smith		+	+		+						+	+	+	+	+	+	+	+		+		+			
<i>Cymatopleura solea</i> var. <i>apiculata</i> (W. Smith) Ralfs	+	+	+	+	+		+	+	+	+	+	+	+	+	+	+	+	+		+		+	+	+	
<i>Cymatopleura solea</i> (Bréb.) W. Smith var. <i>solea</i>		+	+	+	+					+	+	+	+	+	+	+	+	+	+	+	+	+	+	+	
<i>Cymbella affinis</i> Kütz.	+	+	+		+					+	+	+		+	+	+	+	+	+			+			
<i>Cymbella aspera</i> (Ehrenb.) Cleve		+			+	+					+	+		+	+	+	+						+	+	V
<i>Cymbella cistula</i> (Ehrenb.) Kirchner		+	+	+	+	+					+	+	+	+	+	+	+	+	+				+	+	I
<i>Cymbella cistuliformis</i> Krammer																							+		
<i>Cymbella compacta</i> Østrup					+																			+	
<i>Cymbella cymbiformis</i> Ag.																							+		
<i>Cymbella cymbiformis</i> var. <i>nonpunctata</i> Fontell										+															
<i>Cymbella excisa</i> Kütz.													+										+	+	



Table 1 contin.

Taxa / Site	1	2	3	4	5	6	7	8	9	10	11	12	13	14	15	16	17	18	19	20	21	22	0	
<i>Cymbella helvetica</i> Kütz.		+	+		+					+	+		+	+	+			+				+	R	
<i>Cymbella hustedtii</i> Krasske																						+		
<i>Cymbella laevis</i> Naegeli																						+		
<i>Cymbella lanceolata</i> (Ehrenb.) Van Heurck			+		+				+										+		+		R	
<i>Cymbella neocistula</i> Krammer																						+		
<i>Cymbella neocistula</i> var. <i>lunata</i> Krammer																						+		
<i>Cymbella parva</i> (W. Smith) Kirchner												+										+	+	
<i>Cymbella proxima</i> Reimer																						+		V
<i>Cymbella subcistula</i> Krammer												+										+	+	
<i>Cymbella tumida</i> (Bréb.) Van Heurck		+	+	+	+			+		+	+	+	+	+	+	+		+				+		
<i>Cymbella tumidula</i> var. <i>lancetula</i> Krammer		+																						
<i>Cymbella</i> sp. 1		+																						
<i>Cymbella</i> sp. 2		+																						
<i>Cymbopleura amphicephala</i> Naegali		+	+		+						+	+	+	+	+		+		+				+	
<i>Cymbopleura anglica</i> (Lagerstedt) Krammer																							+	
<i>Cymbopleura cuspidata</i> Kütz.		+																					+	
<i>Cymbopleura inaequaliformis</i> Krammer																							+	
<i>Cymbopleura inaequalis</i> (Ehrenb.) Krammer													+										+	V
<i>Cymbopleura lata</i> (Grun.) Krammer																							+	
<i>Cymbopleura naviculiformis</i> (Auerswald) Krammer		+			+	+	+	+	+			+	+	+				+	+			+		
<i>Cymbopleura subaequalis</i> Grun.		+														+							+	
<i>Denticula subtilis</i> Grun.																								+
<i>Denticula tenuis</i> Ag.		+	+		+					+	+	+	+	+	+			+					+	
<i>Diadismus contenta</i> (Grun.) D.G. Mann		+	+							+	+	+	+	+	+	+	+				+	+	+	
<i>Diadismus paracontenta</i> Lange-Bert. & Werum var. <i>paracontenta</i>												+												
<i>Diadismus perpusilla</i> (Grun.) D.G. Mann		+	+									+	+	+				+				+	+	
<i>Diadismus</i> sp. cf. <i>brekkaensis</i> (Petersen) D.G. Mann												+											+	
<i>Diadismus</i> sp. 1														+									+	
<i>Diadismus</i> sp. 2			+																					
<i>Diadismus</i> sp. 3		+										+												
<i>Diatoma ehrenbergii</i> Kütz					+														+				+	
<i>Diatoma mesodon</i> (Ehrenb.) Kütz.		+	+	+	+					+														
<i>Diatoma moniliformis</i> Kütz.		+	+		+					+	+	+	+	+	+	+	+	+				+	+	
<i>Diatoma tenuis</i> Kütz.		+	+	+	+					+	+	+	+	+	+								+	
<i>Diatoma vulgare</i> Bory		+	+	+	+	+			+	+	+	+	+	+	+	+	+	+	+	+	+	+	+	
<i>Diatoma</i> sp. cf. <i>moniliformis</i> Kütz.		+	+		+					+					+									
<i>Didymosphenia geminata</i> (Lyngbe) M. Schmidt		+			+																			
<i>Diploneis elliptica</i> (Kütz.) Cleve		+	+		+							+						+				+	+	
<i>Diploneis fontanella</i> Lange-Bert.												+											+	
<i>Diploneis fontium</i> Reichardt																								+
<i>Diploneis krammeri</i> Lange-Bert. & Reichardt												+											+	+
<i>Diploneis minuta</i> Petersen		+								+	+					+								+
<i>Diploneis modica</i> Hust.		+																						
<i>Diploneis oblongella</i> (Naegeli) Cleve-Euler		+	+	+	+				+	+	+	+	+	+	+	+	+	+	+	+	+	+	+	R
<i>Diploneis ovalis</i> (Hilse) Cleve		+								+	+				+							+	+	R
<i>Diploneis oculata</i> (Bréb.) Cleve		+	+		+					+		+	+	+	+	+						+		
<i>Diploneis parva</i> Cleve		+																					+	E
<i>Diploneis petersenii</i> Hust.		+																					+	
<i>Diploneis pseudoovalis</i> Hust.		+										+												R
<i>Diploneis puella</i> (Schum.) Cleve		+										+										+	+	
<i>Diploneis separanda</i> Lange-Bert.												+										+	+	
<i>Diploneis subovialis</i> Cleve				+																				
<i>Diploneis</i> sp.																	+							
<i>Discostella pseudostelligera</i> (Hust.) Houk & Klee		+			+					+	+	+	+	+	+	+	+	+	+	+	+	+	+	
<i>Discostella stelligera</i> (Cleve & Grun.) Houk & Klee		+			+							+		+										
<i>Discostella woltereckii</i> (Hust.) Houk & Klee																							+	
<i>Discostella</i> cf. <i>woltereckii</i> (Hust.) Houk & Klee		+																						
<i>Encyonema caespitosum</i> (Kütz.) D.G. Mann		+	+		+				+	+	+		+		+	+	+	+	+	+	+	+	+	
<i>Encyonema minutum</i> (Hilse) D.G. Mann		+	+	+	+	+	+	+	+	+	+	+	+	+	+	+	+	+	+	+	+	+	+	

Table 1 contin.

Taxa / Site	1	2	3	4	5	6	7	8	9	10	11	12	13	14	15	16	17	18	19	20	21	22	0		
<i>Encyonema perpusillum</i> (Cleve) D.G. Mann		+											+	+								+			
<i>Encyonema prostratum</i> (Berk.) Kütz.		+	+		+				+	+	+	+	+	+	+	+	+		+			+	+		
<i>Encyonema reichardtii</i> (Krammer) D.G. Mann		+		+										+								+			
<i>Encyonema silesiacum</i> (Bleisch.) D.G. Mann		+			+	+					+	+	+	+	+		+		+			+	+		
<i>Encyonema ventricosum</i> (Ag.) Grun.												+											+	+	
<i>Encyonema cf. perpusillum</i> (Cleve) D.G. Mann					+																				
<i>Encyonopsis cesatii</i> (Rabenh.) Krammer																								+	
<i>Encyonopsis microcephala</i> (Grun.) Krammer		+			+						+	+	+	+	+	+	+	+					+		
<i>Encyonopsis subminuta</i> Krammer & Reichardt		+																							
<i>Eolimna minima</i> Lange-Bert.	+	+	+		+					+	+	+	+	+	+	+	+				+	+	+		
<i>Eolimna subminuscula</i> (Manguin) Moser, Lange-Bert. & Metzeltin	+	+	+	+	+					+	+	+	+	+	+	+	+				+	+	+		
<i>Epithemia adnata</i> (Kütz.) Bréb.	+	+			+					+	+	+	+	+	+								+		
<i>Epithemia sores</i> Kütz.													+										+		
<i>Epithemia turgida</i> (Ehrenb.) Kütz.																							+		
<i>Eucocconeis austriaca</i> (Hust.) Lange-Bert.																								+	
<i>Eucocconeis flexella</i> (Kütz.) Meister		+																							
<i>Eucocconeis laevis</i> (Østrup) Lange-Bert.		+	+								+		+	+	+										
<i>Eunotia bilunaris</i> (Ehrenb.) Schar Schmidt	+	+	+		+	+	+			+	+			+	+	+	+						+		
<i>Eunotia botuliformis</i> Wild, Nörpel & Lange-Bert.													+												
<i>Eunotia curtagrunowii</i> Nörpel-Schempp & Lange-Bert.					+						+														
<i>Eunotia diodon</i> Ehrenb.												+													
<i>Eunotia exigua</i> (Bréb.) Rabenh.											+	+		+										+	
<i>Eunotia flexuosa</i> (Bréb.) Kütz.												+													
<i>Eunotia formica</i> Ehrenb.																						+		V	
<i>Eunotia implicata</i> Nörpel-Schempp, Lange-Bert. & Alles						+	+																		
<i>Eunotia incisa</i> Greg.																						+			
<i>Eunotia islandica</i> Østrup												+													
<i>Eunotia meisteri</i> Hust.										+													+	+	I
<i>Eunotia minor</i> (Kütz.) Grun.		+	+							+		+										+			
<i>Eunotia muscicola</i> v. <i>tridentula</i> (Grun.) Nörpel-Schempp & Lange-Bert.		+										+													
<i>Eunotia mucophilla</i> (Lange-Bert. & Nörpel) Lange-Bert.						+	+		+			+		+	+								+		
<i>Eunotia praerupta</i> Ehrenb.												+													
<i>Eunotia septentrionalis</i> Østrup		+								+														E	
<i>Eunotia soleirolii</i> (Kütz.) Rabenh.																						+			
<i>Eunotia</i> sp. cf. <i>crista-galli</i> Cleve												+													
<i>Eunotia</i> sp. cf. <i>groenlandica</i> (Grun.) Nörpel & Lange-Bert.												+													
<i>Eunotia</i> sp. 1		+										+								+					
<i>Eunotia</i> sp. 2		+																							
<i>Eunotia</i> sp. 3																		+							
<i>Eunotia</i> sp. 4										+															
<i>Fallacia egregia</i> (Hust.) D.G. Mann																							+		
<i>Fallacia insociabilis</i> (Kraske) D.G. Mann		+										+		+	+	+	+			+		+			
<i>Fallacia lenzii</i> (Hust.) Lange-Bert		+	+						+	+	+		+	+	+	+	+					+		E	
<i>Fallacia monoculata</i> (Hust.) D.G. Mann	+	+	+	+					+	+	+	+	+	+	+	+	+		+	+	+	+	+		
<i>Fallacia omissa</i> (Hust.) D.G. Mann		+														+									
<i>Fallacia pygmaea</i> (Kütz.) Stricke & D.G. Mann	+	+	+	+	+			+	+	+	+	+	+	+	+	+	+		+	+	+	+			
<i>Fallacia subhamulata</i> (Grun.) D.G. Mann		+	+	+	+			+	+	+	+	+	+	+	+	+	+		+	+	+	+	+	R	
<i>Fallacia sublucidula</i> (Hust.) D.G. Mann				+							+		+	+		+									
<i>Fistulifera pelliculosa</i> (Bréb.) Lange-Bert.																							+		
<i>Fistulifera saprophila</i> (Lange-Bert. & Bonik) Lange-Bert.	+			+																		+			
<i>Fragilaria acus</i> (Kütz.) Lange-Bert.	+	+	+		+	+	+	+	+	+	+	+	+	+	+	+	+		+			+	+		
<i>Fragilaria austriaca</i> (Grun.) Lange-Bert.					+																		+		
<i>Fragilaria biceps</i> (Kütz.) Lange-Bert.		+		+								+	+									+			
<i>Fragilaria bicapitata</i> A. Mayer		+					+															+			
<i>Fragilaria bidens</i> Heiberg		+																						R	
<i>Fragilaria brevistriata</i> Grun.					+																	+		R	
<i>Fragilaria capucina</i> Desmazieres var. <i>capucina</i>	+	+	+		+					+	+	+	+	+	+	+				+	+	+			
<i>Fragilaria construens</i> f. <i>binodis</i> (Ehrenb.) Hust.	+			+																		+			



Table 1 contin.

Taxa / Site	1	2	3	4	5	6	7	8	9	10	11	12	13	14	15	16	17	18	19	20	21	22	0	
<i>Fraflaria construens</i> f. <i>construens</i> (Ehrenb.) Grun.	+	+	+		+	+	+	+														+		
<i>Fraflaria construens</i> f. <i>subsalina</i> (Hust.) Hust.																						+		R
<i>Fraflaria construens</i> f. <i>venter</i> (Ehrenb.) Hust.					+																	+		
<i>Fraflaria crotonensis</i> Kitton	+	+	+		+																	+		
<i>Fraflaria dilatata</i> (Bréb.) Lange-Bert.					+																	+		V
<i>Fraflaria distans</i> (Grun.) Bukht.																						+		
<i>Fraflaria elliptica</i> Schumann		+																				+		
<i>Fraflaria exigua</i> Grun.																						+		I
<i>Fraflaria famelica</i> (Kütz.) Lange-Bert. var. <i>famelica</i>		+																				+		
<i>Fraflaria fasciculata</i> (Ag.) Lange-Bert.	+	+	+		+	+	+		+															
<i>Fraflaria gracilis</i> Østrup	+	+	+	+	+	+					+	+	+	+		+	+				+	+	+	
<i>Fraflaria lapponica</i> Grun.																						+		E
<i>Fraflaria leptostauron</i> (Ehrenb.) Hust. var. <i>leptostauron</i>											+										+	+		
<i>Fraflaria mesolepta</i> Rabenh.		+	+		+							+	+									+		
<i>Fraflaria nanana</i> Lange-Bert.	+																					+		V
<i>Fraflaria oldenburgiana</i> Hust.																						+		R
<i>Fraflaria pararumpens</i> Lange-Baert., Hofmann, Mann & Werum												+										+		
<i>Fraflaria parasitica</i> (W. Smith) Grun. var. <i>parasitica</i>	+	+	+		+						+	+	+	+	+	+	+					+	+	
<i>Fraflaria parasitica</i> var. <i>subconstricta</i> Grun.	+	+	+		+				+	+	+	+	+	+	+	+	+				+			
<i>Fraflaria perminuta</i> (Grun.) Lange-Bert.		+			+																			
<i>Fraflaria pinnata</i> Ehrenb.	+	+			+	+					+	+	+	+							+	+	+	
<i>Fraflaria pinnata</i> var. <i>intercedens</i> (Grun.)Hust.		+																				+		
<i>Fraflaria pulchella</i> (Ralfs) Lange-Bert.		+																				+		
<i>Fraflaria pseudoconstruens</i> Marciniak																						+		
<i>Fraflaria radians</i> (Kütz.) Lange-Bert.		+											+			+	+					+		
<i>Fraflaria robusta</i> (Fusey) Manguin																						+		R
<i>Fraflaria tenera</i> (W. Smith) Lange-Bert.																						+		V
<i>Fraflaria ulna</i> var. <i>oxyrhynchus</i> (Kütz.) Lange-Bert.		+																						I
<i>Fraflaria ulna</i> var. <i>ulna</i> (Nitzsch.) Lange-Bert.	+	+	+	+	+	+	+	+	+	+	+	+	+	+	+	+	+				+	+	+	
<i>Fraflaria vaucheriae</i> (Kütz.) Petersen	+	+			+					+	+	+	+	+	+	+	+				+	+	+	
<i>Fraflaria virescens</i> Ralfs		+										+	+											E
<i>Fraflaria</i> cf. <i>capensis</i> Grun.		+																						
<i>Fragilaria</i> sp. 1		+																						
<i>Fragilaria</i> sp. 2		+	+														+							
<i>Fragilaria</i> sp. 3		+																						
<i>Fragilaria</i> sp. 4											+													
<i>Frustulia crassinerva</i> (Bréb.) Ross											+												+	
<i>Frustulia rhomboides</i> (Ehrenb.) De Toni						+	+		+													+		
<i>Frustulia saxonica</i> Rabenh.		+																						
<i>Frustulia vulgaris</i> (Thwait.) De Toni	+	+	+	+	+	+	+	+	+	+	+	+	+	+	+	+	+				+	+	+	
<i>Geissleria decussis</i> (Østrup) Lange-Bert. & Metzeltin		+			+	+	+															+		R
<i>Geissleria ignota</i> var. <i>palustris</i> (Krasske) Lange-Bert. & Metzeltin														+										
<i>Gomphonema acuminatum</i> Ehrenb.	+	+	+	+	+	+	+	+		+	+		+	+	+	+	+				+	+	+	
<i>Gomphonema affine</i> Kütz.		+														+						+		R
<i>Gomphonema augur</i> Ehrenb.		+	+							+	+	+	+	+	+	+					+	+		
<i>Gomphonema angustatum</i> (Kütz.) Rabenh.																							+	
<i>Gomphonema angustum</i> Ag.									+													+		
<i>Gomphonema bohemicum</i> Reichelt & Fricke		+																						E
<i>Gomphonema clavatum</i> Ehrenb.																							+	
<i>Gomphonema clevei</i> Fricke																						+		
<i>Gomphonema cymbeliclinum</i> Reichardt & Lange-Bert.												+			+							+		
<i>Gomphonema elegantissimum</i> Reichardt & Lange-Bert.																							+	
<i>Gomphonema exilissimum</i> (Grun.) Lange-Bert. & Reichardt												+										+	+	
<i>Gomphonema gracile</i> Ehrenb.		+	+		+						+		+	+	+		+					+	+	
<i>Gomphonema hebridense</i> Gregory																							+	
<i>Gomphonema insigne</i> Greg.		+									+				+							+		
<i>Gomphonema micropus</i> Kütz.	+	+	+	+	+	+	+		+	+	+	+	+	+	+	+	+				+	+	+	
<i>Gomphonema minutum</i> (Ag.) Ag.	+	+	+	+	+				+				+	+	+	+					+	+	+	

Table 1 contin.

Taxa / Site	1	2	3	4	5	6	7	8	9	10	11	12	13	14	15	16	17	18	19	20	21	22	0	
<i>Gomphonema minutum</i> f. <i>pachypus</i> Lange-Bert. & Reichardt		+																						
<i>Gomphonema olivaceum</i> var. <i>minutissimum</i> Hust.		+													+									
<i>Gomphonema olivaceum</i> var. <i>olivaceoides</i> (Hust.) Lange-Bert.		+		+											+	+						+		
<i>Gomphonema olivaceum</i> (Horn.) Bréb. var. <i>olivaceum</i>	+	+	+	+	+				+	+	+	+	+	+	+	+	+		+	+	+	+		
<i>Gomphonema olivaceolacuum</i> (Lange-Bert. & Reich.) Lange-Bert. & Reichardt					+							+												
<i>Gomphonema parvulum</i> (Kütz.) Rabenh. var. <i>parvulum</i>	+	+	+	+	+	+	+	+	+	+	+	+	+	+	+	+	+		+	+	+	+		
<i>Gomphonema parvulum</i> (Kütz.) Rabenh. var. <i>parvulum</i> f. <i>saprophilum</i>													+											
<i>Gomphonema parvulus</i> (Lange-Bert & Reichardt) Lange-Bert & Reichardt																						+	+	
<i>Gomphonema procerum</i> ? Reichardt & Lange-Bert.		+																						
<i>Gomphonema productum</i> (Grun.) Lange-Bert. & Reichardt		+							+			+	+	+	+	+					+	+	+	
<i>Gomphonema pseudoaugur</i> Lange-Bert.				+																				
<i>Gomphonema pumilum</i> (Grun.) Reichardt & Lange-Bert.	+					+						+									+	+	+	
<i>Gomphonema reichardtii</i> Lange-Bert.		+																						
<i>Gomphonema sarcophagus</i> Greg.		+	+		+					+	+	+	+	+	+	+	+		+	+	+	+	+	V
<i>Gomphonema subclavatum</i> (Grun) Grun.	+	+	+	+	+					+	+	+	+	+	+	+	+				+	+	+	
<i>Gomphonema tergestinum</i> (Grun.) Fricke	+	+	+	+	+					+	+	+	+	+	+	+	+		+	+	+	+	+	I
<i>Gomphonema truncatum</i> Ehrenb.		+	+		+	+	+	+	+	+	+		+	+	+	+						+	+	
<i>Gomphonema utae</i> Lange-Bert. & Reichardt		+										+		+	+								+	
<i>Gomphonema</i> cf. <i>angustum</i> (Kütz.) Rabenh.	+	+	+							+	+		+	+	+	+	+				+	+		
<i>Gomphonema</i> cf. <i>bavaricum</i> Reichardt & Lange-Bert.												+												
<i>Gomphonema</i> cf. <i>bohemicum</i> Reicheld & Fricke												+												
<i>Gomphonema</i> cf. <i>hebridense</i> Gregory							+																	
<i>Gomphonema</i> cf. <i>minutum</i> (Ag.) Ag.																								
<i>Gomphonema</i> cf. <i>pumilum</i> (Grun.) Reichardt & Lange-Bert.		+	+		+					+	+		+	+	+	+	+		+			+		
<i>Gomphonema</i> sp. cf. <i>clevei</i> Fricke		+																						
<i>Gomphonema</i> sp. cf. <i>dichotomum</i> Kütz.		+																						
<i>Gomphonema</i> sp. 1		+										+	+	+			+						+	
<i>Gomphonema</i> sp. 2		+																						+
<i>Gomphonema</i> sp. 3		+																						+
<i>Gomphonema</i> sp. 4													+											
<i>Gomphonema</i> sp. 5		+																						
<i>Gomphonema</i> sp. 6		+																						
<i>Gomphonema</i> sp. 7		+									+		+		+		+							
<i>Gomphonema</i> sp. 8		+																						
<i>Gomphonema</i> sp. 9													+											
<i>Gomphonema</i> sp. 10													+											
<i>Gomphonema</i> sp. 11																							+	
<i>Gyrosigma acuminatum</i> (Kütz.) Rabenh.	+	+	+	+	+	+		+	+	+	+	+	+	+	+	+	+		+	+	+	+		
<i>Gyrosigma attenuatum</i> (Kütz.) Rabenh.		+	+	+	+		+		+	+	+	+	+	+	+	+	+		+		+	+		
<i>Gyrosigma elongatum</i> (W. Smith) Griffith & Henfrey										+														
<i>Gyrosigma obtusatum</i> (Sulivant & Wormley) Boyer	+	+	+	+	+			+	+	+	+	+	+	+	+	+	+		+	+		+		
<i>Gyrosigma sciotonense</i> (Sulivant) Cleve		+	+	+	+				+	+	+	+	+	+	+	+	+		+			+		
<i>Gyrosigma spencerii</i> (W. Smith) Cleve										+														
<i>Gyrosigma</i> sp.												+												
<i>Halamphora montana</i> (Krasske) Levkov	+	+	+	+	+				+	+	+	+	+	+	+	+	+		+	+	+	+		
<i>Halamphora normanii</i> (Rabenh.) Levkov		+		+						+	+	+	+	+	+	+	+				+	+	+	
<i>Halamphora veneta</i> (Kütz.) Levkov	+	+											+		+				+		+	+	+	
<i>Halamphora</i> cf. <i>veneta</i> (Kütz.) Levkov				+																				
<i>Hannaea arcus</i> (Ehrenb.) Patrick					+																			
<i>Hantzschia abundans</i> Lange-Bert.	+		+							+	+	+			+							+	+	
<i>Hantzschia amphioxys</i> (Ehrenb.) Grun.	+	+	+	+	+					+	+	+	+	+	+	+	+		+	+	+	+		
<i>Hippodonta capitata</i> (Ehrenb.) Lange-Bert., Metzeltin & Witkowski	+	+	+	+	+	+	+	+	+	+	+	+	+	+	+	+	+		+	+	+	+		
<i>Hippodonta costulata</i> (Grun.) Lange-Bert., Metzeltin & Witkowski												+			+									



Table 1 contin.

Taxa / Site	1	2	3	4	5	6	7	8	9	10	11	12	13	14	15	16	17	18	19	20	21	22	0	
<i>Hippodonta cf. lueneburgensis</i> (Grun.) Lange-Bert., Metzeltin & Witkowski															+									
<i>Karayevia clevei</i> (Grun.) Round & Bukht.		+																						
<i>Karayevia laterostrata</i> (Hust.) Round & Bukht.						+		+						+										
<i>Kobayasiella subtilissima</i> (Cleve) Lange-Bert.											+					+								
<i>Kolbesia ploenensis</i> (Hust.) Round & Bukht.		+																					+	
<i>Lemnicola hungarica</i> (Grun.) Round & Bassed	+	+	+		+	+	+	+			+	+	+	+	+	+	+					+		
<i>Luticola acidoclinata</i> Lange-Bert.		+									+	+	+			+	+					+	+	R
<i>Luticola cohnii</i> (Hilse) D.G. Mann	+										+													
<i>Luticola dismutica</i> (Hust.) D.G. Mann																+								+
<i>Luticola goeppertiana</i> (Bleisch.) D.G. Mann		+	+		+					+	+		+	+	+	+	+		+			+	+	
<i>Luticola kotschyi</i> (Grun.) D.G. Mann		+			+					+	+	+	+	+	+	+	+				+	+	+	
<i>Luticola mutica</i> (Kütz.) D.G. Mann	+	+	+	+	+	+				+	+	+	+	+	+	+	+		+	+	+	+	+	
<i>Luticola nivalis</i> (Ehrenb.) D.G. Mann	+	+	+			+				+	+	+	+	+	+	+	+		+	+		+		
<i>Luticola paramutica</i> var. <i>binodis</i> Bock (Van de Vijver)		+			+									+	+	+		+						
<i>Luticola paramutica</i> Bock (Van de Vijver)	+	+										+				+								+
<i>Luticola sueoconum</i> var. <i>dismutica</i> (Hust.) D.G. Mann		+																						
<i>Luticola ventricifusa</i> Lange-Bert.												+												
<i>Luticola ventricosa</i> (Kütz.) D.G. Mann	+	+		+	+		+			+	+	+	+	+	+	+	+		+	+	+	+	+	
<i>Luticola cf. cohnii</i> (Hilse) D.G. Mann															+									
<i>Luticola</i> ?		+																						
<i>Mayamaea agrestis</i> (Hust.) Lange-Bert.	+	+	+		+								+		+		+		+					
<i>Mayamaea asellus</i> (Weinhold) Lange-Bert.		+																				+		
<i>Mayamaea atomus</i> var. <i>alcimonica</i> (Reichardt) Reichardt					+							+										+	+	
<i>Mayamaea atomus</i> (Kütz.) Lange-Bert. var. <i>atomus</i>	+	+	+	+						+	+	+	+	+	+	+	+		+	+	+	+	+	
<i>Mayamaea atomus</i> var. <i>permitis</i> (Hust.) Lange-Bert.		+	+		+					+	+	+	+	+	+	+	+		+	+	+	+	+	
<i>Mayamaea excelsa</i> (Krasske) Lange-Bert.	+																							
<i>Mayamaea fossalis</i> (Krasske) Lange-Bert. var. <i>fossalis</i>		+													+	+	+					+		
<i>Mayamaea fossalis</i> (Hust.) Lange-Bert. var. <i>obsidialis</i>																								+
<i>Mayamaea fossalloides</i> (Hust.) Lange-Bert.					+																			
<i>Mayamaea cf. atomus</i> var. <i>permitis</i> (Hust.) Lange-Bert.	+																							
<i>Mayamaea cf. agrestis</i> (Hust.) Lange-Bert.										+		+			+									
<i>Mayamaea cf. recondita</i> (Hust.) Lange-Bert.	+																							
<i>Mayamaea</i> sp. 1		+												+	+									+
<i>Mayamaea</i> sp. 2	+																							
<i>Melosira lineata</i> (Dilwyn) Ag.											+													
<i>Melosira varians</i> Ag.	+	+	+	+	+	+	+	+	+	+	+	+	+	+	+	+	+		+	+	+	+	+	
<i>Meridion circulare</i> Ag. var. <i>circulare</i>	+	+	+	+	+	+	+	+	+	+	+	+	+	+	+	+	+		+	+	+	+	+	
<i>Meridion circulare</i> var. <i>constrictum</i> (Ralfs) Van Heurck	+	+		+	+	+	+	+	+	+	+	+	+	+	+	+	+		+	+	+	+	+	
<i>Muelleria gibbula</i> Spaulding & Stoermer		+																						+
<i>Muelleria</i> sp. cf. <i>gibbula</i> Spaulding & Stoermer	+																							
<i>Navicula amphiceropsis</i> Lange-Bert. & Rumrich																								+
<i>Navicula antonii</i> Lange-Bert.	+	+	+	+	+					+	+	+	+	+	+	+	+		+	+	+	+	+	
<i>Navicula arvensis</i> var. <i>major</i> Lange-Bert.		+													+									+
<i>Navicula associata</i> Lange-Bert.	+	+	+		+								+	+	+	+	+							
<i>Navicula aquaedurae</i> Lange-Bert.											+	+												
<i>Navicula bacilloides</i> Hust.	+									+	+				+	+	+					+	+	
<i>Navicula capiata</i> Ehrenb.																								+
<i>Navicula capitatoradiata</i> Germain	+	+	+	+	+	+				+	+	+	+	+	+	+	+		+			+		
<i>Navicula cari</i> Ehrenb.		+			+					+	+	+	+		+	+	+					+	+	+
<i>Navicula cariocincta</i> Lange-Bert.																+								R
<i>Navicula caterva</i> Hohn & Hellerman		+																						
<i>Navicula cincta</i> (Ehrenb.) Ralfs		+	+		+					+	+	+	+	+	+	+	+		+	+	+	+	+	
<i>Navicula cryptocephala</i> Kütz.	+	+	+	+	+	+	+	+	+	+	+	+	+	+	+	+	+		+	+	+	+	+	
<i>Navicula cryptotenella</i> Lange-Bert.	+	+	+	+	+	+	+	+	+	+	+	+	+	+	+	+	+		+	+	+	+	+	
<i>Navicula cryptotenelloides</i> Lange-Bert.	+	+	+		+					+	+	+	+	+	+	+	+		+	+	+	+	+	
<i>Navicula digitoradiata</i> (Gregory) Ralfs										+														R
<i>Navicula digitoconvergens</i> Lange-Bert.																							+	
<i>Navicula erifuga</i> Lange-Bert.		+	+		+					+	+		+	+	+	+	+		+			+	+	

Table 1 contin.

Taxa / Site	1	2	3	4	5	6	7	8	9	10	11	12	13	14	15	16	17	18	19	20	21	22	0	
<i>Navicula exigua</i> Gregory																								+
<i>Navicula germainii</i> Wallace		+			+																			
<i>Navicula gregaria</i> Donkin		+	+	+	+	+	+	+	+	+	+	+	+	+	+	+	+		+	+	+	+	+	
<i>Navicula harderii</i> Hust.														+		+	+						+	
<i>Navicula integra</i> (W. Smith) Ralfs		+	+		+	+	+	+											+		+			
<i>Navicula lanceolata</i> (Ag.) Kütz.		+	+	+	+	+	+	+	+	+	+	+	+	+	+	+	+		+	+	+	+	+	
<i>Navicula libonensis</i> Schoeman					+								+		+	+	+				+	+		
<i>Navicula longicephala</i> Hust.		+													+							+		
<i>Navicula medioconvexa</i> ? Hust.															+								R	
<i>Navicula microcari</i> Lange-Bert.															+									
<i>Navicula moskali</i> Metzeltin, Witkowski & Lange-Bert.	+																					+		
<i>Navicula novaesiberica</i> Lange-Bert.		+		+	+				+		+	+	+	+	+									
<i>Navicula oblonga</i> (Kütz.) Kütz.		+												+	+							+	R	
<i>Navicula oppugnata</i> Hust.		+			+																	+	R	
<i>Navicula phyllepta</i> Kütz.				+																				
<i>Navicula radiososa</i> Kütz.		+	+	+	+	+	+	+		+	+	+	+	+	+	+	+		+		+	+	+	
<i>Navicula radiosafallax</i> Lange-Bert.		+																						
<i>Navicula recens</i> (Lange-Bert.) Lange-Bert.		+							+		+	+	+	+	+					+	+	+		
<i>Navicula reichardtiana</i> Lange-Bert.	+	+	+	+	+					+	+	+	+	+	+	+	+	+	+	+	+	+	+	
<i>Navicula reinhardtii</i> (Grun.) Grun.		+	+		+																	+		
<i>Navicula rhynchotella</i> Lange-Bert.		+			+																	+	R	
<i>Navicula rhynchocephala</i> Kütz.		+				+	+	+	+					+		+						+		
<i>Navicula rostellata</i> (Kütz.) Cleve		+	+		+	+				+	+			+	+	+						+	+	
<i>Navicula salinarium</i> Grun. var. <i>salinarium</i>		+	+		+				+															
<i>Navicula salinarium</i> var. <i>rostrata</i> Hust.					+																			
<i>Navicula simulata</i> Manguin																							+	
<i>Navicula sinuata</i> Schumann																							+	
<i>Navicula slesvicensis</i> Grun.	+	+	+		+				+	+	+		+	+	+	+	+		+	+	+	+	+	
<i>Navicula splendicula</i> Land		+																					V	
<i>Navicula tenelloides</i> Hust.		+				+				+	+	+	+	+	+	+	+		+	+	+	+	+	
<i>Navicula tripunctata</i> (O.F. Müller) Bory	+	+	+	+	+				+	+	+	+	+	+	+	+	+		+	+	+	+	+	
<i>Navicula trivialis</i> Lange-Bert.	+	+	+	+	+	+			+	+	+	+	+	+	+	+	+		+	+	+	+	+	
<i>Navicula trophicatrix</i> Lange-Bert.																						+		
<i>Navicula upsaliensis</i> (Grun.) Peragallo	+	+	+	+	+	+	+	+	+	+	+	+	+	+	+	+	+		+	+	+	+	R	
<i>Navicula vandamii</i> Schoeman & Archbald var. <i>vandamii</i>		+			+								+	+	+		+		+		+			
<i>Navicula veneta</i> Kütz.	+	+	+		+					+	+	+	+	+	+	+	+		+	+	+	+	+	
<i>Navicula ventralis</i> Krasske		+																						
<i>Navicula vilaplani</i> (Lange-Bert. & Sabather) Lange-Bert. & Sabather		+								+		+	+	+	+	+	+		+	+	+	+		
<i>Navicula viridula</i> (Kütz.) Ehrenb.	+	+	+	+	+				+	+	+	+	+	+	+	+	+	+	+	+	+	+	+	
<i>Navicula viridulacalcis</i> Lange-Bert.		+																						
<i>Navicula vulpina</i> Kütz.		+																						
<i>Navicula wiesneri</i> Lange-Bert.		+												+	+	+	+						+	
<i>Navicula</i> sp. cf. <i>microdigitoradiata</i> Lange-Bert.																			+					
<i>Navicula</i> sp. cf. <i>moskali</i> (?) Metzeltin, Witkowski & Lange-Bert.		+																						
<i>Navicula</i> cf. <i>parsura</i> Hust.															+									
<i>Navicula</i> sp. cf. <i>symmetrica</i> Patrick		+																						
<i>Navicula</i> sp. cf. <i>streckerae</i> Lange-Bert. & Witkowski					+																			
<i>Navicula</i> sp. cf. <i>suchlandtii</i> Hust.												+												
<i>Navicula</i> cf. var. <i>vilaplani</i> Lange-Bert. & Sabather				+																				
<i>Navicula</i> sp. 1		+																					+	
<i>Navicula</i> sp. 2		+											+	+	+								+	
<i>Navicula</i> sp. 3		+																						
<i>Navicula</i> sp. 4			+																					
<i>Naviculadicta stauroneioides</i> ? Lange-Bert.		+																						
<i>Navicymbula pusilla</i> (Grun.) Krammer					+																			
<i>Neidium affine</i> (Ehrenb.) Pftzer		+			+					+	+	+	+	+	+	+						+		
<i>Neidium affine</i> var. <i>longiceps</i> (Greg.) Cleve															+									
<i>Neidium ampliatus</i> (Ehrenb.) Krammer		+	+	+	+	+	+		+	+	+	+	+	+	+		+	+	+		+	+	V	



Table 1 contin.

Taxa / Site	1	2	3	4	5	6	7	8	9	10	11	12	13	14	15	16	17	18	19	20	21	22	0	
<i>Neidium apiculatum</i> Reimer				+																				
<i>Neidium binodis</i> (Ehrenb.) Pfitzer													+											
<i>Neidium binodeforme</i> Krammer		+	+				+			+	+	+	+	+	+	+	+		+		+	+		
<i>Neidium bisulcatum</i> var. <i>subampliatum</i> Krammer					+								+		+								+	
<i>Neidium dubium</i> (Ehrenb.) Cl.	+	+			+			+		+	+	+	+	+	+	+	+		+		+		I	
<i>Neidium hercynicum</i> ? A. Mayer															+									
<i>Neidium productum</i> (W. Smith) Cleve						+	+								+							+	+	
<i>Nitzschia abbreviata</i> Hust.																							+	
<i>Nitzschia acicularis</i> (Kütz.) W. Smith	+	+	+	+	+					+	+	+	+	+	+	+	+	+	+	+	+	+	+	
<i>Nitzschia acicularoides</i> Hust.					+																			
<i>Nitzschia acidoclinata</i> Lange-Bert.	+	+									+	+		+	+					+	+	+	+	
<i>Nitzschia acula</i> (Kütz.) Hantzsch																						+	+	
<i>Nitzschia alpina</i> Grun.												+												
<i>Nitzschia amphibia</i> Grun.	+	+	+	+	+	+				+	+		+	+	+	+	+		+	+	+	+	+	
<i>Nitzschia angustata</i> Lange-Bert.		+			+								+	+	+	+			+	+		+		
<i>Nitzschia angustatula</i> Lange-Bert.		+	+		+					+	+	+	+		+			+						
<i>Nitzschia archibaldii</i> Lange-Bert.	+	+	+		+						+	+	+	+	+	+	+				+	+		
<i>Nitzschia bacillum</i> Hust.		+	+		+								+	+		+								
<i>Nitzschia brevissima</i> Grun.				+						+		+												
<i>Nitzschia brunoi</i> Lange-Bert.												+												
<i>Nitzschia bulheimana</i> (Rabenh.) Smith		+	+							+	+		+		+	+								R
<i>Nitzschia calida</i> Grun.		+		+	+					+	+	+	+	+	+	+	+		+	+		+		
<i>Nitzschia capitellata</i> Hust.	+	+	+	+	+	+	+			+	+	+	+	+	+	+	+		+	+	+	+	+	
<i>Nitzschia clausii</i> Hantzsch																	+	+						
<i>Nitzschia communis</i> Rabenh.	+	+										+	+	+	+	+	+					+	+	
<i>Nitzschia constricta</i> (Kütz.) Ralfs		+	+	+	+					+	+	+	+	+	+	+	+	+	+	+	+	+	+	+
<i>Nitzschia debilis</i> (Arnott) Grun.	+	+	+	+	+	+	+	+	+	+	+	+	+	+	+	+	+	+	+	+	+	+	+	+
<i>Nitzschia delognei</i> Grun.					+																			
<i>Nitzschia denticula</i> Grun.		+											+							+				
<i>Nitzschia desertorum</i> Hust.		+								+					+									
<i>Nitzschia dissipata</i> (Kütz.) Grun. ssp. <i>dissipata</i>	+	+	+	+	+	+	+			+	+	+	+	+	+	+	+	+	+	+	+	+	+	+
<i>Nitzschia dissipata</i> var. <i>media</i> (Hantzsch) Grun.	+	+			+					+	+	+	+	+	+				+		+	+	+	
<i>Nitzschia dravelliensis</i> Coste & Ricard		+				+																		
<i>Nitzschia dubia</i> W. Smith		+	+	+	+					+	+	+	+	+	+	+	+		+	+		+		
<i>Nitzschia filiformis</i> (Smith) Van Heurck				+																				
<i>Nitzschia fonticola</i> Grun.	+	+	+		+	+	+			+	+	+		+	+	+	+	+		+	+		+	
<i>Nitzschia frequens</i> Hust.												+												
<i>Nitzschia frustulum</i> (Kütz.) Grun. var. <i>frustulum</i>	+	+	+	+	+	+		+		+	+	+	+	+	+	+	+	+	+	+	+	+	+	+
<i>Nitzschia frustulum</i> var. <i>inconspicua</i> (Grun.) Grun.	+	+			+					+	+		+	+	+	+	+		+	+	+	+	+	+
<i>Nitzschia graciliformis</i> Lange-Bert. & Simonsen		+	+									+			+									
<i>Nitzschia gracilis</i> Hantzsch	+	+	+		+	+				+	+	+			+		+					+	+	
<i>Nitzschia hantzschiana</i> Rabenh.																							+	
<i>Nitzschia heufferiana</i> Grun.		+	+		+					+	+	+	+	+	+	+	+		+	+	+	+	+	+
<i>Nitzschia homburgiensis</i> Lange-Bert.	+	+										+		+		+	+					+		
<i>Nitzschia hungarica</i> Grun.	+	+	+	+	+					+	+	+	+	+	+	+	+		+	+	+	+	+	+
<i>Nitzschia intermedia</i> Hantzsch		+	+		+					+			+	+	+	+			+					
<i>Nitzschia lacuum</i> Lange-Bert.																							+	
<i>Nitzschia levidensis</i> (W. Smith) Grun.		+	+	+	+	+	+	+	+	+	+		+	+	+	+	+		+	+		+	+	
<i>Nitzschia linearis</i> (Ag.) Smith	+	+	+	+	+					+	+	+	+	+	+	+	+	+	+	+	+	+	+	+
<i>Nitzschia microcephala</i> Grun.		+	+								+													
<i>Nitzschia ovalis</i> Arnott																		+	+					
<i>Nitzschia palea</i> (Kütz.) W. Smith	+	+	+	+	+	+	+	+	+	+	+	+	+	+	+	+	+		+	+	+	+	+	+
<i>Nitzschia palea</i> var. <i>debilis</i> (Kütz.) Grun.																							+	
<i>Nitzschia paleacea</i> (Grun.) Grun.		+	+		+						+								+			+		
<i>Nitzschia perminuta</i> Grun.	+	+	+	+						+	+	+	+	+	+	+	+					+	+	
<i>Nitzschia pura</i> Hust.					+							+												
<i>Nitzschia pusilla</i> Grun.	+	+	+		+					+	+	+	+	+	+	+	+		+	+	+	+	+	+
<i>Nitzschia pumila</i> Hust.		+																						
<i>Nitzschia recta</i> Hantzsch	+	+	+	+	+					+	+	+	+	+	+	+	+	+	+	+	+	+	+	+

Table 1 contin.

Taxa / Site	1	2	3	4	5	6	7	8	9	10	11	12	13	14	15	16	17	18	19	20	21	22	0
<i>Nitzschia sigma</i> (Kütz.) W. Smith		+	+		+	+	+			+	+	+	+	+	+	+	+	+	+	+	+	+	
<i>Nitzschia sigmaidea</i> (Nitzsch) W. Smith		+	+	+	+	+	+	+	+	+	+	+	+	+	+	+	+		+	+	+	+	
<i>Nitzschia salinarum</i> Grun.		+			+							+	+	+		+	+				+	+	
<i>Nitzschia solgensis</i> Cleve-Euler		+	+									+	+	+	+	+	+				+	+	
<i>Nitzschia sociabilis</i> Hust.		+	+		+				+	+	+	+	+	+	+	+	+		+			+	
<i>Nitzschia solita</i> Hust.			+												+								
<i>Nitzschia subacicularis</i> Hust.		+	+		+				+	+	+	+										+	
<i>Nitzschia sublinearis</i> Hust.																						+	
<i>Nitzschia subtilis</i> Grun.		+			+					+	+	+	+	+	+	+	+		+	+		+	
<i>Nitzschia supralitorea</i> Lange-Bert.		+			+						+	+							+		+	+	
<i>Nitzschia tabellaria</i> Grun.	+	+	+		+						+				+	+			+			+	
<i>Nitzschia tenuis</i> W. Smith	+	+	+	+	+	+	+	+	+	+	+	+	+	+	+	+	+	+	+	+	+	+	+
<i>Nitzschia terrestris</i> (Perersen) Hust.														+									
<i>Nitzschia tubicola</i> Grun.															+					+			+
<i>Nitzschia tryblionella</i> Hantzsch		+	+		+					+			+		+							+	
<i>Nitzschia umbonata</i> (Ehrenb.) Lange-Bert.		+		+					+			+			+	+							+
<i>Nitzschia vermicularis</i> (Kütz.) Hantzsch		+	+	+	+				+	+	+	+	+	+	+	+	+	+	+	+	+	+	+
<i>Nitzschia vermicularoides</i> Lange-Bert.																							+
<i>Nitzschia</i> sp. cf. <i>agnita</i> Hust.											+												
<i>Nitzschia</i> sp. cf. <i>bergii</i> Cleve-Euler																							
<i>Nitzschia</i> sp. cf. <i>commutata</i> Grun.		+																					
<i>Nitzschia</i> sp. cf. <i>fasciculata</i> (Grun.) Grun.										+													
<i>Nitzschia</i> sp. cf. <i>ovalis</i> Arnott												+											
<i>Nitzschia</i> sp. cf. <i>paleacea</i> (Grun.) Grun.				+	+																		
<i>Nitzschia</i> cf. <i>supralitorea</i> Lange-Bert.													+										
<i>Nitzschia</i> sp. 1																							
<i>Nitzschia</i> sp. 2						+																	
<i>Nitzschia</i> sp. 3	+																						
<i>Nitzschia</i> sp. 4	+																						
<i>Parlibellus crucicula</i> (Smith) Witkowski, Lange-Bert. & Metzeltin		+			+																	+	R
<i>Parlibellus protracta</i> (Grun.) Witkowski, Lange-Bert. & Metzeltin		+		+					+			+	+	+								+	
<i>Parlibellus protractoides</i> (Hust.) Witkowski, Lange-Bert. & Metzeltin		+	+	+		+	+	+	+		+	+	+	+	+	+	+	+	+	+	+	+	R
<i>Pinnularia acuminata</i> W. Smith																							+
<i>Pinnularia appendiculata</i> (Ag.) Cleve		+								+		+	+	+	+	+						+	+
<i>Pinnularia borealis</i> Ehrenb. var. <i>borealis</i>	+	+										+		+				+		+	+	+	+
<i>Pinnularia borealis</i> var. <i>sublinearis</i> Krammer		+									+						+	+					
<i>Pinnularia borealis</i> var. <i>scalaris</i> (Ehrenb.) Rabenh.									+														
<i>Pinnularia borealis</i> var. <i>rectangularis</i> Carlson		+														+							
<i>Pinnularia brebissonii</i> (Kütz.) Rabenh.		+	+	+	+		+		+	+		+	+	+	+	+	+		+	+	+	+	
<i>Pinnularia clevei</i> var. <i>minor</i> (Hust.) Krammer																							+
<i>Pinnularia divergentissima</i> var. <i>triundulata</i> Krammer																							+
<i>Pinnularia dubitabis</i> var. <i>minor</i> Krammer														+									
<i>Pinnularia esoxiformis</i> Fusey																							+
<i>Pinnularia flexuosa</i> Cleve																							+
<i>Pinnularia frauenbergiana</i> Reichardt														+							+		
<i>Pinnularia gentilis</i> (Donkin) Cleve																							+
<i>Pinnularia gibba</i> Ehrenb.						+	+					+											+
<i>Pinnularia globiceps</i> Greg.			+	+					+			+		+							+		+
<i>Pinnularia grunowii</i> Krammer		+	+		+					+	+	+	+	+	+		+			+	+		
<i>Pinnularia iselana</i> Krammer												+	+	+	+		+				+	+	
<i>Pinnularia islandica</i> ? Østrup		+													+								
<i>Pinnularia legunem</i> Ehrenb.													+										
<i>Pinnularia lundii</i> Hust.		+	+	+	+				+	+		+	+	+	+	+	+		+	+	+	+	
<i>Pinnularia major</i> (Kütz.) Cleve		+																					
<i>Pinnularia marchica</i> Schönfelder												+											+
<i>Pinnularia microstauron</i> (Ehrenb.) Cleve	+	+	+	+	+							+	+						+			+	V
<i>Pinnularia neomajor</i> Krammer											+												
<i>Pinnularia nodosa</i> (Ehrenb.) W. Smith												+											



Table 1 contin.

Taxa / Site	1	2	3	4	5	6	7	8	9	10	11	12	13	14	15	16	17	18	19	20	21	22	0		
<i>Pinnularia nodosa</i> var. <i>robusta</i> (Foged) Krammer																							+		
<i>Pinnularia obscura</i> Krasske	+	+		+	+					+	+	+	+	+	+	+	+				+	+	+		
<i>Pinnularia obscuriformis</i> Krammer					+								+	+			+						+		
<i>Pinnularia oriunda</i> Krammer		+	+		+							+	+	+	+		+				+	+	+		
<i>Pinnularia parvulissima</i> Krammer																							+		
<i>Pinnularia perirrorata</i> Krammer												+											+	+	
<i>Pinnularia renata</i> Krammer																									
<i>Pinnularia rhenohassiaca</i> Krammer & Lange-Bert.																							+		
<i>Pinnularia rhombarea</i> var. <i>udulata</i> Krammer										+															
<i>Pinnularia rhombarea</i> var. <i>variarea</i> Krammer																							+		
<i>Pinnularia rupestris</i> Hantzsch		+	+	+					+	+	+		+	+	+		+					+		E	
<i>Pinnularia schonfelderii</i> Krammer												+				+	+	+				+	+	E	
<i>Pinnularia schroederii</i> (Hust.) Krammer												+													
<i>Pinnularia silvatica</i> Petersen												+												+	
<i>Pinnularia similis</i> Hust.										+			+		+										
<i>Pinnularia sinistra</i> Krammer	+	+										+	+	+			+				+	+			
<i>Pinnularia septentrionalis</i> Krammer												+													
<i>Pinnularia subcapitata</i> Greg.												+		+	+								+		
<i>Pinnularia subcapitata</i> var. <i>subrostrata</i> Krammer																						+			
<i>Pinnularia subcapitata</i> var. <i>elongata</i> Krammer		+					+	+				+													
<i>Pinnularia subcommutata</i> Krammer														+			+					+	+		
<i>Pinnularia subcommutata</i> var. <i>nonfasciata</i> Krammer		+									+	+			+						+	+	+		
<i>Pinnularia subgibba</i> Krammer																							+	+	E
<i>Pinnularia subgibba</i> var. <i>undulata</i> Krammer																							+		
<i>Pinnularia subrupertris</i> Krammer					+							+	+	+	+	+	+				+	+	+	E	
<i>Pinnularia subundulata</i> Østrup																							+		
<i>Pinnularia undula</i> (Schumann) Krammer													+										+		
<i>Pinnularia viridiformis</i> Krammer		+	+	+	+	+	+			+	+	+	+	+	+	+	+				+	+	+	E	
<i>Pinnularia viridiformis</i> var. <i>minor</i> Krammer																							+		
<i>Pinnularia viridis</i> (Nitzsch) Ehrenb.		+			+	+			+	+		+	+	+	+		+		+	+	+	+	+		
<i>Pinnularia</i> cf. <i>appendiculata</i> (Ag.) Cleve														+											
<i>Pinnularia</i> cf. <i>cherryfieldiana</i> Krammer																							+		
<i>Pinnularia</i> cf. <i>frauenburgiana</i> Reichardt																+									
<i>Pinnularia</i> cf. <i>kuetzingii</i> Krammer														+										+	
<i>Pinnularia</i> cf. <i>oriundiformis</i> Krammer																							+		
<i>Pinnularia</i> cf. <i>schoenfelderii</i> Krammer		+																							
<i>Pinnularia</i> cf. <i>silvatica</i> Petersen																									
<i>Pinnularia</i> cf. <i>subrombica</i> Krammer																								+	
<i>Pinnularia</i> cf. <i>viridiformis</i> Krammer												+													
<i>Pinnularia</i> sp. 1		+										+													
<i>Pinnularia</i> sp. 2		+																							
<i>Pinnularia</i> sp. 3													+												
<i>Pinnularia</i> sp. 4																							+		
<i>Placoneis abiscoensis</i> (Hust.) Lange-Bert. & Metzeltin																							+		
<i>Placoneis anglica</i> (Ralfs) Cox																							+		
<i>Placoneis clementis</i> (Grun.) Cox		+		+	+	+	+	+	+	+	+	+	+	+	+	+	+			+		+			
<i>Placoneis constans</i> (Hust.) Cox												+											+		
<i>Placoneis dicephala</i> (Ehrenb.) Mereschkowsky									+												+		+		
<i>Placoneis elginensis</i> (Greg.) Cox		+	+	+	+	+						+			+					+		+	+		
<i>Placoneis exigua</i> var. <i>signata</i> (Hust.) Hawarth & Kelly																							+		
<i>Placoneis gastrum</i> (Ehrenb.) Mereschkowsky	+				+																		+		
<i>Placoneis paraelginensis</i> Lange-Bert.		+			+						+	+		+	+						+	+	+		
<i>Placoneis placentula</i> (Ehrenb.) Cox					+						+				+	+							+		
<i>Placoneis pseudoanglica</i> Lange-Bert.						+							+										+		
<i>Placoneis subplacentula</i> (Hust.) Cox																									
<i>Placoneis undulata</i> (Østrup) Lange-Bert.																							+		
<i>Placoneis</i> cf. <i>abiscoensis</i> (Hust.) Lange-Bert. & Metzeltin																						+			
<i>Placoneis</i> sp.														+		+								+	
<i>Platessa conspicua</i> (Mayer) Lange-Bert.		+			+					+			+	+	+								+		

Table 1 contin.

Taxa / Site	1	2	3	4	5	6	7	8	9	10	11	12	13	14	15	16	17	18	19	20	21	22	0	
<i>Planothidium delicatum</i> (Kütz.) Round & Bukht.		+											+											
<i>Planothidium ellipticum</i> (Cleve) Round & Bukht.		+							+	+	+		+	+	+	+	+		+				+	
<i>Planothidium frequentissimum</i> (Lange-Bert.) Round & Bukht.	+	+			+	+	+	+	+		+	+	+	+	+	+	+			+	+	+		
<i>Planothidium lanceolatum</i> (Bréb.) Round & Bukht.	+	+	+	+	+	+	+	+	+	+	+	+	+	+	+	+	+		+	+	+	+	+	
<i>Planothidium rostratum</i> (Østrup) Lange-Bert.		+			+	+	+	+						+									+	
<i>Psammothidium bioretii</i> (Germain) Bukht. & Round		+				+	+	+	+					+								+		
<i>Psammothidium grischunum</i> (Wuthrich) Bukht. & Round		+									+	+		+	+									
<i>Psammothidium helveticum</i> (Hust.) Bukht. & Round		+																						
<i>Psammothidium laeunburgianum</i> (Hust.) Bukht. & Round		+									+	+	+	+		+	+				+		V	
<i>Psammothidium subatomoides</i> (Hust.) Bukht. & Round		+				+	+				+	+			+						+		V	
<i>Psammothidium cf. grischunum</i> (Wuthrich) Bukht. & Round				+																				
<i>Puncticulata radiosa</i> (Lemmermann) Håkansson		+	+		+					+							+							
<i>Reimeria sinuata</i> (Greg.) Kociolek & Stoermer	+	+	+		+					+	+	+	+	+	+		+				+	+		
<i>Reimeria uniseriata</i> Sala, Guerrero & Ferrario		+	+		+					+	+	+	+	+	+	+	+		+			+		
<i>Rhoicosphenia abbreviata</i> (Ag.) Lange-Bert.	+	+	+	+	+	+	+	+	+	+	+	+	+	+	+	+	+	+	+	+	+	+	+	
<i>Rhopalodia brebissonii</i> Krammer																	+							
<i>Rhopalodia gibba</i> (Ehrenb.) Müller		+									+					+	+	+			+	+		
<i>Rhopalodia gibberula</i> (Ehrenb.) Müller		+	+								+		+	+	+	+	+					+		
<i>Rhopalodia rupestris</i> (W. Smith) Krammer																+							R	
<i>Rhopalodia cf. rupestris</i> (W. Smith) Krammer										+														
<i>Rossithidium petersenii</i> (Hust.) Round & Bukht.						+																		
<i>Scoliopleura peisonis</i> Grun.												+												
<i>Sellaphora americana</i> (Ehrenb.) D.G. Mann																					+		R	
<i>Sellaphora bacillum</i> (Ehrenb.) D.G. Mann		+	+		+					+	+	+	+		+	+				+	+		V	
<i>Sellaphora hustedtii</i> (Krasske) Lange-Bert. & Werum															+							+	V	
<i>Sellaphora joubaudii</i> (Germain) Aboal	+	+	+								+	+	+	+	+	+	+			+	+	+		
<i>Sellaphora levissima</i> (Kütz.) D.G. Mann.						+																+		
<i>Sellaphora mutata</i> (Krasske) Lange-Bert.					+											+								
<i>Sellaphora nana</i> (Hust.) Lange-Bert.	+																				+			
<i>Sellaphora pseudopupula</i> (Krag.) Lange-Bert.												+								+		+	+	E
<i>Sellaphora pupula</i> (Kütz.) Mereschk.		+	+	+	+	+	+	+	+	+	+	+	+	+	+	+	+	+	+	+	+	+	+	
<i>Sellaphora seminulum</i> (Grun.) D.G. Mann		+	+		+						+	+	+	+	+	+	+			+	+	+		
<i>Sellaphora stroemii</i> (Hust.) D.G. Mann		+											+									+		
<i>Sellaphora cf. stroemii</i> (Hust.) D.G. Mann												+												
<i>Simonsenia delognei</i> (Grun.) Lange-Bert.		+									+	+	+	+	+	+	+			+	+	+		
<i>Stauroneis acidoclinata</i> Lange-Bert. & Werum													+										+	
<i>Stauroneis acuta</i> W. Smith																						+		
<i>Stauroneis amphicephala</i> Kütz.																							+	
<i>Stauroneis anceps</i> Ehrenb.	+	+	+		+					+	+	+	+	+	+	+	+		+	+	+	+		
<i>Stauroneis borrichii</i> (Petersen) Lund	+																					+	+	
<i>Stauroneis gracilior</i> (Ehrenb.) Reichard																+						+		
<i>Stauroneis gracilis</i> Ehrenb.																						+		V
<i>Stauroneis kriegerii</i> Patrick		+	+		+					+	+	+	+	+	+							+		
<i>Stauroneis laterostrata</i> Hust.		+																						
<i>Stauroneis lauenburgiana</i> Hust.																							+	
<i>Stauroneis legumen</i> (Ehrenb.) Kütz.						+															+	+	+	
<i>Stauroneis leguminopsis</i> Lange-Bert. & Krammer													+										+	
<i>Stauroneis optusa</i> Lagerstedt												+											+	
<i>Stauroneis parathermicola</i> Lange-Bert.	+											+										+	+	
<i>Stauroneis phoenicenteron</i> (Nitzsch) Ehrenb.		+	+	+	+	+	+	+	+	+	+	+	+	+	+	+	+		+	+	+	+	+	V
<i>Stauroneis producta</i> Grun.																							+	
<i>Stauroneis reichardtii</i> Lange-Bert.												+											+	
<i>Stauroneis separanda</i> Lange-Bert. & Werum		+	+		+					+	+		+	+	+	+	+		+	+	+	+		
<i>Stauroneis smithii</i> Grun.		+	+	+	+	+	+	+	+	+	+	+	+	+	+	+	+	+	+	+	+	+	+	
<i>Stauroneis subgracilis</i> Lange-Bert. & Krammer												+										+		
<i>Stauroneis tackei</i> (Hust.) Krammer, Lange-Bert., Kuesber & Metzeltin		+									+	+	+	+	+						+	+	+	



Table 1 contin.

Taxa / Site	1	2	3	4	5	6	7	8	9	10	11	12	13	14	15	16	17	18	19	20	21	22	0	
<i>Stauroneis thermicola</i> (Petersen) Lund	+	+			+					+	+			+	+	+	+			+	+	+	R	
<i>Stauroneis undata</i> Hust.		+														+								
<i>Stauroneis cf. agrestis</i> Petersen	+																							
<i>Stauroneis cf. borrichii</i> (Petersen) Lund	+	+														+	+	+						
<i>Stauroneis</i> sp. 1		+																						
<i>Stauroneis</i> sp. 2		+																						
<i>Stauroneis</i> sp. 3										+						+								
<i>Stenopterobia</i> sp.													+	+	+	+	+							
<i>Stephanodiscus hantzschii</i> Grun.	+	+	+		+				+	+	+	+	+	+	+	+	+	+	+	+	+	+	+	
<i>S. minutulus</i> (Kütz.) Cleve & Moller		+			+						+	+	+	+	+	+	+					+		
<i>Surirella angusta</i> Kütz.	+	+	+	+	+	+	+	+	+	+	+	+	+	+	+	+	+	+	+	+	+	+	+	
<i>Surirella bifrons</i> Ehrenb.																						+		V
<i>Surirella biseriata</i> Bréb.		+	+		+						+	+	+	+	+	+	+			+		+		
<i>Surirella brebissonii</i> Krammer & Lange-Bert. var. <i>brebissonii</i>		+	+	+	+	+	+	+	+	+	+	+	+	+	+	+	+	+	+	+	+	+	+	R
<i>Surirella brebissonii</i> var. <i>kuetzingii</i> Krammer & Lange-Bert.	+	+	+		+			+		+	+	+	+	+	+		+		+	+	+	+		
<i>Surirella brebissonii</i> var. <i>punctata</i> Krammer									+														+	
<i>Surirella crumena</i> Bréb.		+			+						+		+	+	+	+								R
<i>Surirella elegans</i> Ehrenb.		+							+							+						+		V
<i>Surirella helvetica</i> Brun												+										+		
<i>Surirella linearis</i> W. Smith			+		+					+			+	+	+	+	+		+	+	+	+		
<i>Surirella minuta</i> (Bréb.) Kütz.	+	+	+	+	+	+			+	+	+	+	+	+	+	+	+	+	+	+	+	+	+	
<i>Surirella ovalis</i> Bréb.		+		+	+				+	+	+	+	+	+	+	+	+					+	+	
<i>Surirella robusta</i> Ehrenb.			+																					V
<i>Surirella spirallis</i> Kütz.																						+		
<i>Surirella splendida</i> (Ehrenb.) Kütz.		+	+	+	+				+	+	+	+			+							+		
<i>Surirella tenera</i> Greg.		+	+		+			+	+				+	+	+	+	+							
<i>Surirella tericola</i> Lange-Bert. & Alles		+	+		+				+	+	+	+	+	+	+	+	+		+	+	+	+		
<i>Surirella visurgis</i> Hust.	+																					+		
<i>Surirella cf. tericola</i> Lange-Bert.	+											+												
<i>Surirella</i> sp. 1		+			+										+	+								
<i>Surirella</i> sp. 2	+																						+	
<i>Tabellaria fenestrata</i> (Lyngbe) Kütz.		+				+	+																	V
<i>Tabellaria flocculosa</i> (Roth) Kütz.		+				+	+			+		+										+	+	
<i>Thalassiosira duostra</i> Pienaar					+																	+		
<i>Thalassiosira pseudonana</i> Halse & Heimal	+	+			+							+	+	+	+	+						+		
<i>Thalassiosira weissflogii</i> (Roth) Kütz.		+	+		+						+				+	+		+						
<i>Thalassiosira cf. weissflogii</i> (Roth) Kütz.																								
<i>Thalassiosira cf. aestivalis</i> Grun.		+													+									
<i>Thalassiosira cf. duostra</i> Pienaar		+																						
<i>Thalassiosira</i> sp.																						+		
The sum of diatom taxa	147	400	197	121	253	100	71	61	126	192	227	279	255	261	286	213	226	53	147	155	365	271	-	

Explanations: Column 0: E = endangered; V = vulnerable; R = rare; I = indeterminate (according to Siemińska et al. 2006). Column 1 – soil. Columns 2–22 are a names of rivers and streams: 2 – Wisłok, 3 – Zalew Rzeszowski, 4 – Łubienka, 5 – San (near Jarosław), 6 – Gołębiówka, 7 – Szuwarka, 8 – Świerkowiec, 9 – Lubcza, 10 – Różanka, 11 – Morwawa, 12 – Baryczka, 13 – Pielnica, 14 – Stobnica, 15 – Mleczka, 16 – Strug, 17 – Ryjak, 18 – Wisłoka (near Dębica), 19 – Wielopolka, 20 – Trzcianka, 21 – Żołynianka, 22 – Matysówka.

of Algae (11.5% micro-flora). In this group of 80 taxa there were: 40 of the most rare taxa (R), of which 23 were vulnerable (V), 11 endangered (E) and 6 indeterminate (I) – Table 1, Plate 1: 31–40.

Studies conducted on cultivated soils in Boguchwała, Dąbrowa and Krasne in 2009–2011 indicated the presence of 147 diatom taxa,

of which the most numerous were – *Hantzschia amphioxys*, *Mayamaea atomus*, *Nitzschia palea*, *N. pusilla*, *Pinnularia obscura* and *Stauroneis thermicola*. Along with the noted diatoms there were 6 taxa from the Red List, including: *Stauroneis thermicola*, which occurs numerously and is a dominant species, frequently reaching above 20% of the total number.

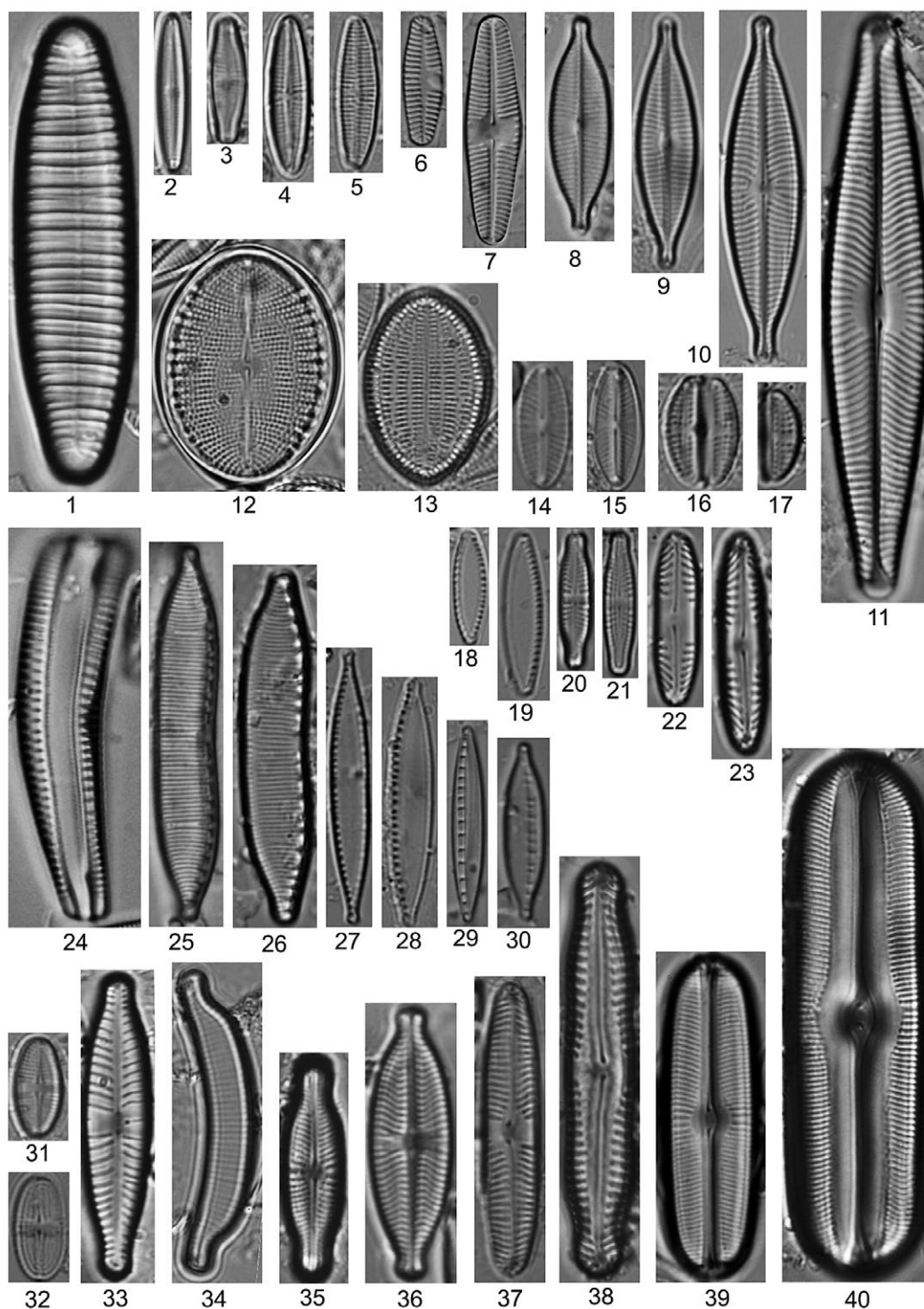


Plate 1. Selected aquatic and soil diatoms taxa: 1 – *Diatoma vulgaris* Bory, 2-3 – *Achnanthydium minutissimum* (Kütz.) Czarn. var. *minutissimum*, 4-5 – *Achnanthydium pyrenaicum* (Hust.) Kobayasi, 6-7 – *Planothidium lanceolatum* (Bréb.) Round & Bukht., 8-9 – *Navicula gregaria* Donkin, 10 – *N. capitatoradiata* Germain, 11 – *N. lanceolata* (Ag.) Kütz., 12 – *Cocconeis pediculus* Ehrenb., 13 – *C. placentula* var. *lineata* (Ehrenb.) Van Heurck, 14-15 – *Mayamaea atomus* (Kütz.) Lange-Bert. var. *atomus*, 16-17 – *Amphora pediculus* (Kütz.) Grun., 18-19 – *Nitzschia pusilla* Grun., 20-21 – *Stauroneis thermicola* (Petersen) Lund, 22-23 – *Pinnularia obscura* Krasske, 24 – *Rhicosphenia abbreviata* (Ag.) Lange-Bert., 25-26 – *Hantzschia amphioxys* (Ehrenb.) Grun., 27-28 – *Nitzschia palea* (Kütz.) W. Smith, 29-30 – *N. dissipata* (Kütz.) Grun. ssp. *dissipata*, 31 – *Psammothidium lauerburgianum* (Hust.) Bukht. & Round, 32 – *P. subatomoides* (Hust.) Bukht. & Round, 33 – *Gomphonema sarcophagus* Greg., 34 – *Eumotia septentrionalis* Østrup, 35 – *Parliberillus protractoides* (Hust.) Witkowski, Lange-Bert. & Metzeltin, 36 – *Geissleria decussis* (Østrup) Lange-Bert. & Metzeltin, 37 – *Pinnularia schoenfelderi* Krammer, 38 – *P. nodosa* (Ehrenb.) W. Smith, 39 – *Sellaphora bacillum* (Ehrenb.) D.G. Mann, 40 – *S. americana* (Ehrenb.) D.G. Mann (magnification 1000×)



DISCUSSION

Running waters and cultivated soils on the territory of the Podkarpacie Province are characterized by a huge richness of diatom species (Table 1). The amounts of taxa found (738 taxa in waters and 147 taxa in soils) during 5 years of studies are proved.

Most of the studies were conducted on inflows of the Wisłok River [Mucha et al. 2009, Tambor, Noga 2011, Pajączek et al. 2012] and on the Wisłok itself [Noga 2012], in which there were 400 taxa diatom identified. In 1970–1995 Rakowska [2001] recorded a similar number of diatoms in the rivers of central Poland (the highest number was identified in the Rawka River – 444 taxa). During studies conducted in 1993–2007 in the valley of the Kobylanka stream, on the Krakowsko–Częstochowska Upland, the existence of 307 diatom taxa was noted [Wojtal 2009]. In both cases these were studies over periods of many years and they involved a huge amount of studied samples. Hence the species richness of diatoms in rivers and streams of the Podkarpacie Province presented is very impressive.

The studied rivers and streams of the territory of the Podkarpacie Province were characterized by a similar domination structure of diatoms, especially in the middle and lower courses, where there are anthropogenical transformations of the environment. On the majority of study sites the following diatoms dominated: *Navicula lanceolata*, *N. gregaria*, *N. capitatoradiata*, *Nitzschia palea*, *N. dissipata* ssp. *dissipata*, *Achnanthydium minutissimum* var. *minutissimum*, *A. pyrenaicum*, *Amphora pediculus*, *Diatoma vulgaris*, *Rhoicosphenia abbreviata*, *Planothidium lanceolatum*, *Cocconeis pediculus*, and *C. placentula* var. *lineata*. These diatoms prefer alkaline waters (pH>7) and eutrophic, that is fertile, waters, of the second and third classes of quality [Van Dam et al. 1994, Hofmann et al. 2011].

The most often recorded dominants on the majority of study sites were: *Navicula lanceolata* and *N. gregaria*, the latter being a halophytic species. *N. lanceolata* growth the best in waters, which are more mesotrophic and eutrophic [Krammer, Lange-Bertalot 1986–1991, Lange-Bertalot, Steindorf 1996, Hofmann et al. 2011].

The upper sections of the majority of studied rivers and streams were characterized by the dominance of: *Achnanthydium minutissimum* var.

minutissimum and *A. pyrenaicum*. *Achnanthydium minutissimum* var. *minutissimum* has a wide ecological amplitude and develops from oligo- to eutrophic conditions, whereas *A. pyrenaicum* is determined as an alkaliphilic species [Van Dam et al. 1994, Lange-Bertalot, Steindorf 1996]. According to Hofmann [1994] it is known as an indifferent species, with respect to pH values. Both taxa have a wide range of tolerance in relation to the trophic [Hofmann 1994], whereas, according to Van Dam et al. [1994], *A. pyrenaicum* is determined as a mesotrophic species. These taxa were also registered numerously in the streams of the Tatra Mountains [Kawecka 2012].

According to different authors of studies of benthic diatoms in slightly or highly polluted rivers there are similar dominant species, from which the most frequent are: *Planothidium lanceolatum*, *Cocconeis placentula*, *Navicula lanceolata*, *N. gregaria*, *N. tripunctata*, *Nitzschia palea*, etc. [Wasylik 1985, Kawecka 1986, Ligowski 1988, Rakowska 2001].

In the diatom flora of the Podkarpacie Province, 11.5% taxa are endangered and rare, located on the Polish Red List of Algae [Siemińska et al. 2006]. The places of occurrence of these diatoms are, among others, the upper sections of rivers and streams, where the endangered species of *Pinnularia*: *P. rupestris*, *P. schoenfelderii*, *P. subrupestris*, *P. subgibba* and *P. undula* occur. These are mainly species, which prefer waters from oligo- to mesosaprobous, with low and moderate values of conductivity [Krammer 2000, Hofmann et al. 2011]. Some species occur in the majority of rivers and streams in the Podkarpacie Province, others only in the form of individual specimens [Noga 2012, Pajączek et al. 2012].

The area of the Podkarpacie Province is still weakly known with respect to algological studies. The whole valley of the San River has hardly been studied, with the exception of the section of the river around Jarosław city and two inflows in the Dynowski Foothills – the Łubienka and Baryczka streams [Noga, Siry 2010]. At the moment studies have begun on diatoms in the valley of the upper San, which promise to be unusually interesting [Noga, unpublished data]. Similar studies on soil diatoms have been conducted for two years, so far on a small amount of study sites. The introductory results presented indicate a huge species richness of diatoms, which in the future, as a result of other studies conducted, will surely increase in number.

REFERENCES

1. Hofmann G. 1994. Aufwuchs-Diatomeen in Seen und ihre Eignung als Indikatoren der Trophie. *Bibliotheca Diatomologica* 30, pp. 241. J. Cramer, Berlin – Stuttgart.
2. Hofmann G., Werum M. & Lange-Bertalot H. 2011. Diatomeen im Süßwasser – Benthos vom Mitteleuropa. Bestimmungsflorea Kieselalgen für die ökologische Praxis. Über 700 der häufigsten Arten und ihre Ökologie. [In:] H. Lange-Bertalot (eds), pp. 908. A.R.G. Gantner Verlag K.G.
3. Kawecka B. 2012. Diatom diversity in streams of the Tatra National Park (Poland) as indicator of environmental conditions, pp. 213. Szafer Institute of Botany, Polish Academy of Sciences, Kraków.
4. Kawecka B. 1986. The effect of light deficiency on communities of sessile algae in the Olczycki stream (Tatra Mts, Poland). *Acta Hydrobiol.* 28: 379–386.
5. Kawecka B., Sanecki J. 2003. *Didymosphenia geminata* in running waters of S Poland – Symptom of change in water quality. *Hydrobiol.* 495: 193–201.
6. Kondracki J. 2001. Geografia regionalna Polski, pp. 463. PWN, Warszawa.
7. Krammer K. 2000. The genus *Pinnularia*. [In:] *Diatoms of Europe 1*. H. Lange-Bertalot (eds), pp. 1–703. A.R.G. Gantner Verlag K.G., Vaduz.
8. Krammer K., Lange-Bertalot H. 1986–1991. Bacillariophyceae. [In:] *Süßwasserflora von Mitteleuropa 2(1–4)*. H. Ettl, J. Gerloff & H. Heyning (eds), G. Fischer Verlag, Stuttgart – New York – Jena.
9. Kwandrans J. 1989. Ekologiczna charakterystyka zbiorowisk glonów osiadłych w Białej i Czarnej Wiselce, źródłowych potokach rzeki Wisły (Beskid Śląski, Polska Południowa). *Acta Hydrobiol.* 31(1–2): 43–74.
10. Lange-Bertalot H. 2001. Diatoms of the European inland waters and comparable habitats. *Navicula sensu stricto*, 10 Genera Separated from *Navicula sensu lato*, *Frustulia*. [In:] *Diatoms of Europe 2*. H. Lange-Bertalot (ed.), pp. 1–526. A.R.G. Gantner Verlag. K.G., Vaduz.
11. Lange-Bertalot H., Steindorf A. 1996. Rote liste der limnischen Kieselalgen (Bacillariophyceae) Deutschlands. *Schrittenreihe für Vegetationskunde*, 28: 633–677.
12. Ligowski R. 1988. Sessile algae of the Widawka river. *Acta Univ. Lodz., Folia Limnol.* 3: 9–49.
13. Mucha Ł., Musiałek M., Noga T., Pajęczek A., Paśko M., Pelczar J. 2009. Różnorodność glonów w wodach Wielopolki, Różanki, Mleczki i Morwawy. *Homo Naturalis* przyrodnicze, społeczne i ekonomiczne aspekty rozwoju zrównoważonego, pp. 203–210. WORD-PRESS, Katowice.
14. Noga T. 2012. Diversity of diatom communities in the Wisłok River (SE Poland). [In:] K. Wołowski, I. Kaczmarska, J. M. Ehrman & A.Z. Wojtal (eds), *Phycological Reports: Current advances in algal taxonomy and its applications: phylogenetic, ecological and applied perspective*, pp. 109–128. Institute of Botany Polish Academy of Sciences, Krakow.
15. Noga T., Siry. 2010. Różnorodność flory okrzemek w potoku Łubienka (Pogórze Dynowskie, Polska SE). *Zeszyty naukowe PTIE i PTG*, 12: 75–86.
16. Pajęczek A., Musiałek M., Pelczar J., Noga T. 2012. Diversity of diatoms in the Mleczka River, Morwawa River and Różanka Stream (tributaries of the Wisłok River, SE Poland), with particular reference to threatened species. [In:] K. Wołowski, I. Kaczmarska, J.M. Ehrman & A.Z. Wojtal (eds), *Phycological Reports: Current advances in algal taxonomy and its applications: phylogenetic, ecological and applied perspective*, pp. 129–152. Institute of Botany Polish Academy of Sciences, Krakow.
17. Rakowska B. 2001. Studium różnorodności okrzemek ekosystemów wodnych Polski niżowej, pp. 77. Wydawnictwo Uniwersytetu Łódzkiego, Łódź.
18. Wołowski K. 2003. Różnorodność gatunkowa – glony. [In:] R. Andrzejewski & A. Weigle (eds), *Różnorodność biologiczna Polski*, pp. 37–48. Narodowa Fundacja Ochrony Środowiska, Warszawa.
19. Siemińska J. 1977. Stopień poznania flory glonów Polski i jej zmiany pod wpływem działalności człowieka. *Wszechświat*, 9: 222–224.
20. Siemińska J. 1990. Polska Bibliografia Fykologiczna. *Bibliografie Botaniczne*, 3, pp. 464. Polska Akademia Nauk, Instytut Botaniki im. Szafera, Kraków – Wrocław.
21. Siemińska J., Pajęk J. 1992. Polska Bibliografia Fykologiczna za lata 1981–1990. *Bibliografie Botaniczne*, 6, pp. 181. Polska Akademia Nauk, Instytut Botaniki im. Szafera, Kraków.
22. Siemińska J., Bąk M., Dziedzic J., Gąbka M., Gregorowicz P., Mrozińska T., Pelechaty M., Owsiany P. M., Pliński M., Witkowski A. 2006. Red list of the algae in Poland. [In:] Z. Mirek, K. Zarzycki, W. Wojewoda & Z. Szelaąg (eds), *Red list of plants and fungi in Poland*, pp. 37–52. Szafer Institute of Botany, Polish Academy of Sciences, Kraków.
23. Stanek-Tarkowska J., Noga T. 2011. The influence of two tillage systems on diatom communities in wheat plantations. [In:] J. Matuła, D. Richter & J. Urbaniak (red.), *Book of abstracts XXX International Conference of the Polish Phycological Society*, pp. 187. Wrocław – Pawłowice, 19–21.05.2011.
24. Stanek-Tarkowska J., Noga T. 2012. Zbiorowiska okrzemek rozwijające się na glebach pyłowych pod uprawą kukurydzy w rejonie Podkarpacia. *Fragm. Florist. Geobot. Polon.*, 19(2): 525–536.



25. Tambor A., Noga T. 2011. Różnorodność flory okrzemek w rzece Lubcza i potoku Lubenia (Podgórze Rzeszowskie, Polska SE). *Rocznik Przemyski*, 47(3): 105–118.
26. Van Dam H., Martens A., Sinkeldam J. 1994. A coded checklist and ecological indicator values of freshwater diatoms from the Netherlands. *Netherlands J. Aquatic Ecol.*, 28: 117–133.
27. Wasylik K. 1985. Diatom communities in pure and polluted waters in the Biała Przemyska river basin (Southern Poland). *Acta Hydrobiol.*, 25/26: 287–315.
28. Wojtal A. 2009. Diatom flora of the Kobylanka stream near Kraków (Wyżyna Krakowsko-Częstochowska Upland, S Poland). *Polish Bot. Journal*, 54(2): 129–330.